

WAAS CH 86227 W24A	APP CRS 238°	Rwy Idg TDZE Apt Elev	6201 2087 2105
--	------------------------	-----------------------------	---

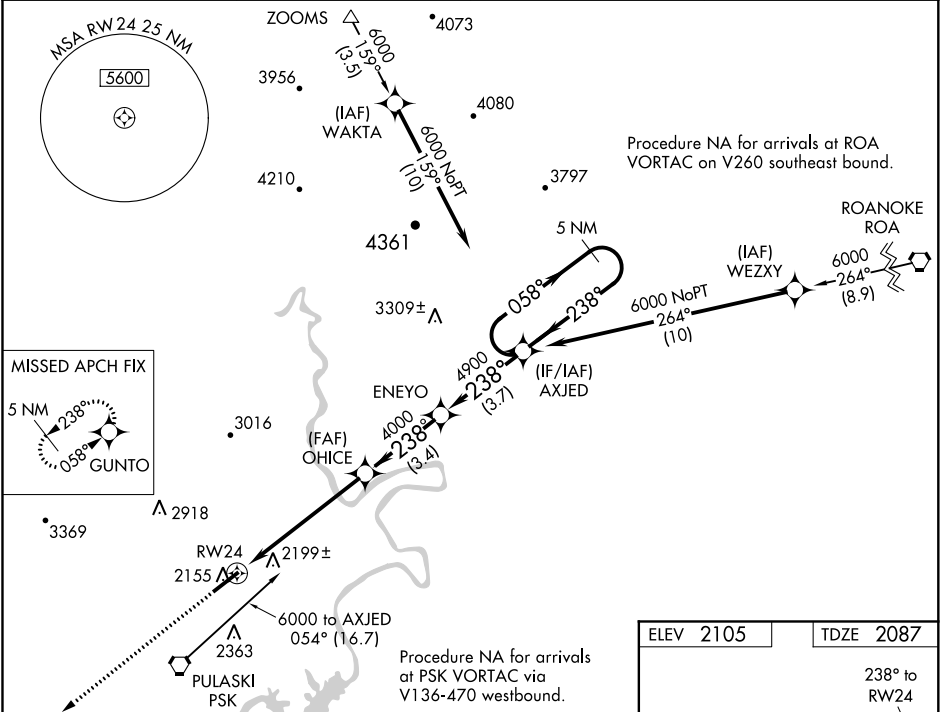
RNAV (GPS) RWY 24
NEW RIVER VALLEY (PSK)

RNP APCH.

Baro-VNAV NA when using Blacksburg altimeter setting. For uncompensated Baro-VNAV systems, LNAV/VNAV NA below -19°C or above 45°C. When local altimeter setting not received, use Blacksburg altimeter setting and increase all DA 36 feet, and all MDA 40 feet; increase LNAV/VNAV all Cats and LNAV Cat C visibility ¼ SM.

MISSED APPROACH:
Climb to 5000 direct GUNTO and hold.

AWOS-3 127.375	ROANOKE APP CON 126.0 339.8	ROANOKE CLNC DEL 121.7	UNICOM 122.7 (CTAF) 0
--------------------------	---------------------------------------	----------------------------------	---------------------------------



5000	GUNTO	OHICE	ENEYO	AXJED	5 NM Holding Pattern
RW24	4000	4000	4900	6000	GP 3.00° TCH 44
5.8 NM	3.4 NM	3.7 NM			
CATEGORY	A	B	C	D	
LPV DA	2337-1	250 (300-1)			
LNAV/VNAV DA	2502-1½	415 (400-1½)			
LNAV MDA	2460-1	373 (400-1)	2460-1¼	373 (400-1¼)	
CIRCLING	2620-1	515 (600-1)	2620-1½	2680-2	575 (600-2)

