

APP CRS  
**229°**

Rwy Idg  
**5219**

TDZE  
**296**

Apt Elev  
**306**

RNAV (GPS) Y RWY 23

FREDERICK MUNI (FDK)

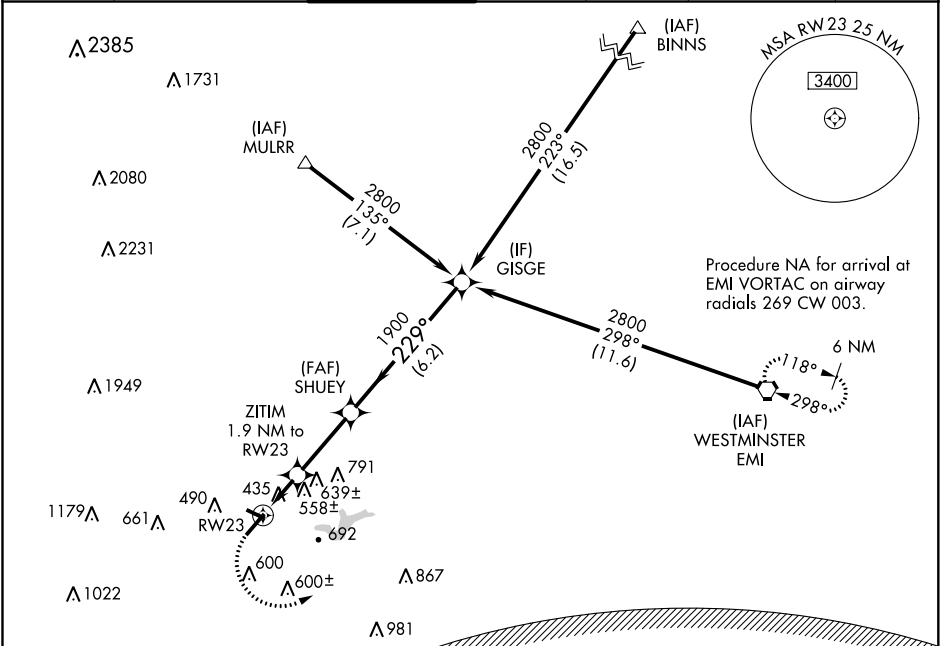
RNP APCH

▼ Inop table does not apply to Cat C. Rwy 23 helicopter visibility reduction below ¾ SM NA. Circling Rwy 30 NA at night.

ODALS

MISSED APPROACH: Climbing left turn to 3000 direct EMI VORTAC and hold.

ATIS <b>124.875</b>	POTOMAC APP CON <b>125.525 291.625</b>	FREDERICK TOWER ★ <b>132.4 (CTAF) 0</b>	GND CON <b>121.975</b>	CLNC DEL <b>121.975</b>	CLNC DEL <b>126.9</b> (When twr closed)	UNICOM <b>122.95</b>
------------------------	---	--	---------------------------	----------------------------	---	-------------------------



ELEV 306

TDZE 296

REIL Rws 5, 12, 23 and 30

HIRL Rwy 5-23

MIRL Rwy 12-30

WASHINGTON DC METROPOLITAN SFRA

WARNING -- WASHINGTON DC SFRA. CTC POTOMAC APP CON

3000 EMI

VGSI and descent angles not coincident (VGSI Angle 3.00/TCH 40).

Procedure Turn NA

RW23

ZITIM 1.9 NM to RW23

SHUEY

GISGE

229°

2800

1900

1020

3.41° TCH 50

1.9 NM

3 NM

6.2 NM

CATEGORY	A	B	C	D
LNAV MDA	820-¾ 524 (600-¾)	820-1½ 524 (600-1½)	820-1½ 524 (600-1½)	820-1¾ 524 (600-1¾)
CIRCLING	920-1 614 (700-1)	1100-2¼ 794 (800-2¼)	1200-2¾ 894 (900-2¾)	