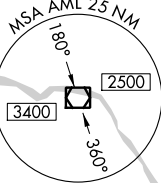


**ILS RWY 19C (CAT II & III)**  
WASHINGTON DULLES INTL (IAD)

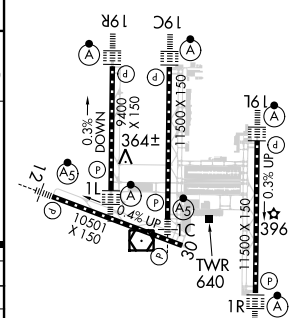
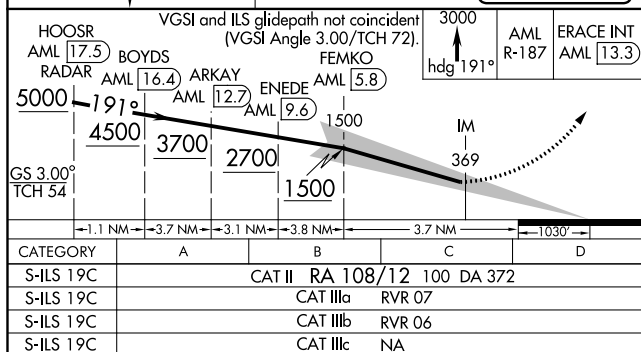
**MISSED APPROACH:** Climb to 3000 via heading 191° and AML VOR/DME R-187 to ERACE INT/AML 13.3 DME and hold.

CLNC DEL <b>135.7 317.8</b>	CPDLC
--------------------------------	-------

DME or RADAR  
REQUIRED



ELEV 312		TDZE 272
----------	---	----------



CATEGORY II & III ILS - SPECIAL AIRCREW  
& AIRCRAFT CERTIFICATION REQUIRED

TDZ/CL 1C, 1L, 1R, 12,  
19C and 19R  
REIL Rwy 30  
HIRL all Rwys