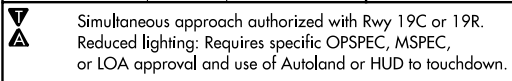

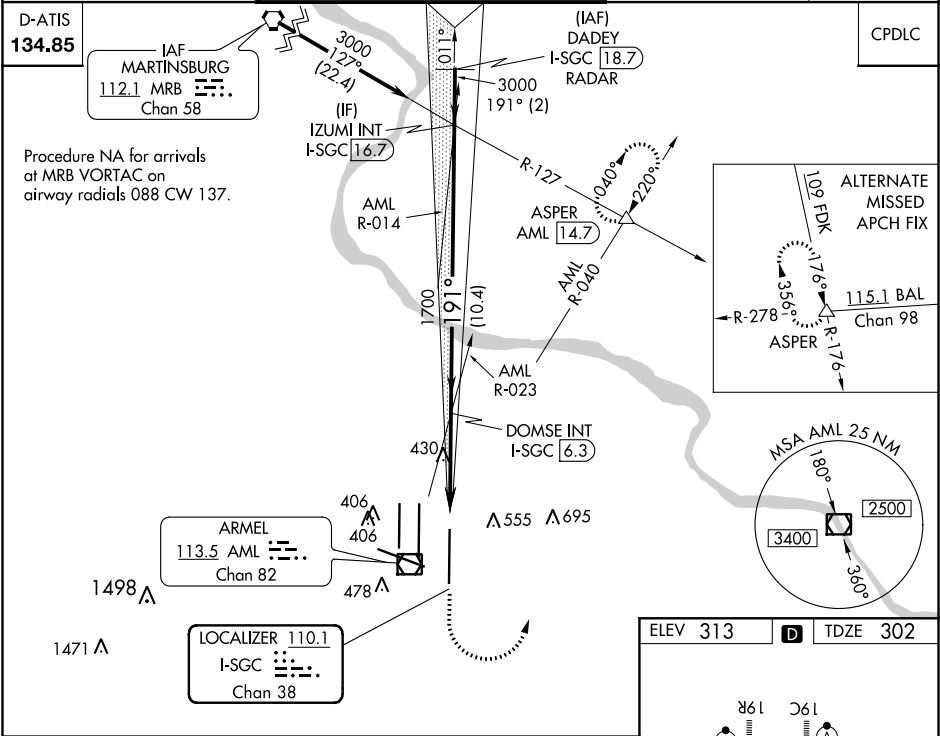


LOC/DME I-SGC	APP CRS	Rwy Idg	11500
<b>110.1</b>	<b>191°</b>	TDZE	<b>302</b>
Chan <b>38</b>		Apt Elev	<b>313</b>

ILS RWY 19L (SA CAT II)  
WASHINGTON DULLES INTL (IAD)

	ALSIF-2 	MISSED APPROACH: Climb to 800 then climbing left turn to 3000 on heading 010° and AML VOR/DME R-040 to ASPER INT/AML 14.7 DME and hold.
--	--	---

POTOMAC APP CON <b>120.45 306.925</b> (241°-330°) <b>128.525 306.925</b> (091°-240°) <b>126.1 338.25</b> (331°-090°)	DULLES TOWER <b>120.1 317.8</b> (Rwy 1R/19L) <b>120.25 348.6</b> (Rwy 1C/19C) <b>134.425 348.6</b> (Rwys 1L/19R and 12/30)	GND CON <b>121.9 317.8</b> (EAST) <b>121.625 348.6</b> (WEST)	CLNC DEL <b>135.7 317.8</b>
---	---	---	--------------------------------



VGSI and ILS glidepath not coincident (VGSI Angle 3.00/TCH 75).			
DADEY I-SGC 18.7 RADAR	IZUMI INT I-SGC 16.7	DOMSE INT I-SGC 6.3	ASPER
3000	3000	1700	
GS 3.00° TCH 55			
2 NM	10.4 NM	4.2 NM	999'
CATEGORY	A	B	C
S-ILS 19L	RA 102/12 100 DA 402		

CATEGORY II ILS - SPECIAL AIRCREW  
& AIRCRAFT CERTIFICATION REQUIRED

