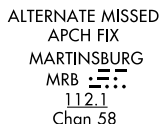


**ILS RWY 1C (SA CAT II)**  
**WASHINGTON DULLES INTL (IAD)**

**MISSED APPROACH:** Climb to 3000 on heading 011° and FDK VOR R-200 to FDK VOR and hold.

CLNC DEL  
**135.7 317.8**

CPDLC

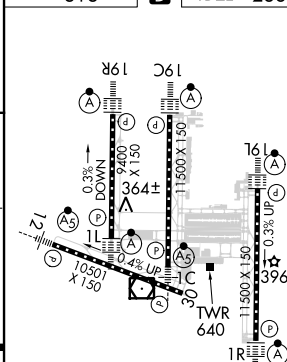


NE-3, 03 DEC 2020 to 31 DEC 2020

NE-3, 03 DEC 2020 to 31 DEC 2020

5000  
-089°  
(19)

TDZE 286



FDK



CATEGORY	A	B	C	D
S-ILS 1C	RA 104/12 100 DA 386			

**CATEGORY II ILS - SPECIAL AIRCREW  
& AIRCRAFT CERTIFICATION REQUIRED**

TDZ/CL Rwy 1C, 1L,  
1R, 12, 19C and 19R  
REIL Rwy 30  
HIRL all Rwys