

LOC I-OSZ <u>111.3</u>	APP CRS 011°	Rwy ldg 11500 TDZE 286 Apt Elev 313
----------------------------------	------------------------	--

ILS or LOC/DME RWY 1C
WASHINGTON DULLES INTL (IAD)

V **A** DME on AML VOR/DME. Simultaneous reception of I-QSZ and AML DME required. Simultaneous approach authorized with ILS or LOC/DME Rwy 1L, ILS Rwy 1L (Cat II), ILS Rwy 1L (Cat III), ILS or LOC Rwy 1R, ILS Rwy 1R (Cat II), ILS Rwy 1R (Cat III). DME required. For Inoperative MALSR, increase S-LOC Cts/D visibility to RVR 5000. ***1800 RVR authorized with the use of FD or AP or Hads to DA.

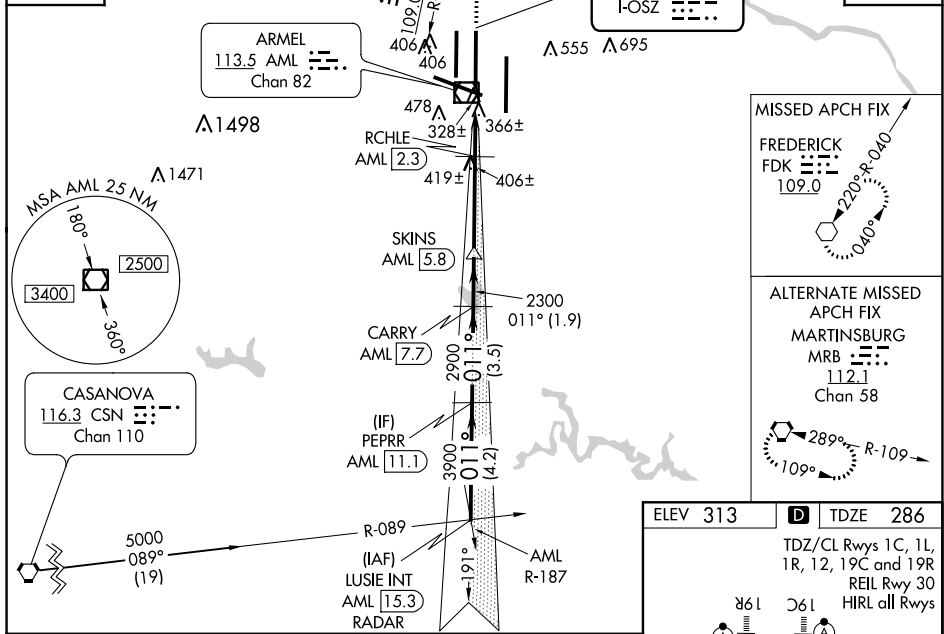
MALSR



MISSED APPROACH:
Climb to 3000 on
heading 011° and
FDK VOR R-200 to
FDK VOR and hold.

POTOMAC APP CON	DULLES TOWER	GND CON	CLNC DEL
120.45 306.925 (241°-330°)	120.1 317.8 (Rwy 1R/19L)	121.9 317.8 (EAST)	135.7 317.8
128.525 306.925 (091°-240°)	120.25 348.6 (Rwy 1C/19C)	121.625 348.6 (WEST)	
126.1 338.25 (331°-090°)	134.425 348.6 (Rwys 1L/19R and 12/30)		

D-ATIS 134.85	FDK -200	LOCALIZER <u>111.3</u>	CPDLC
-------------------------	-------------	------------------------	-------

[illegible]