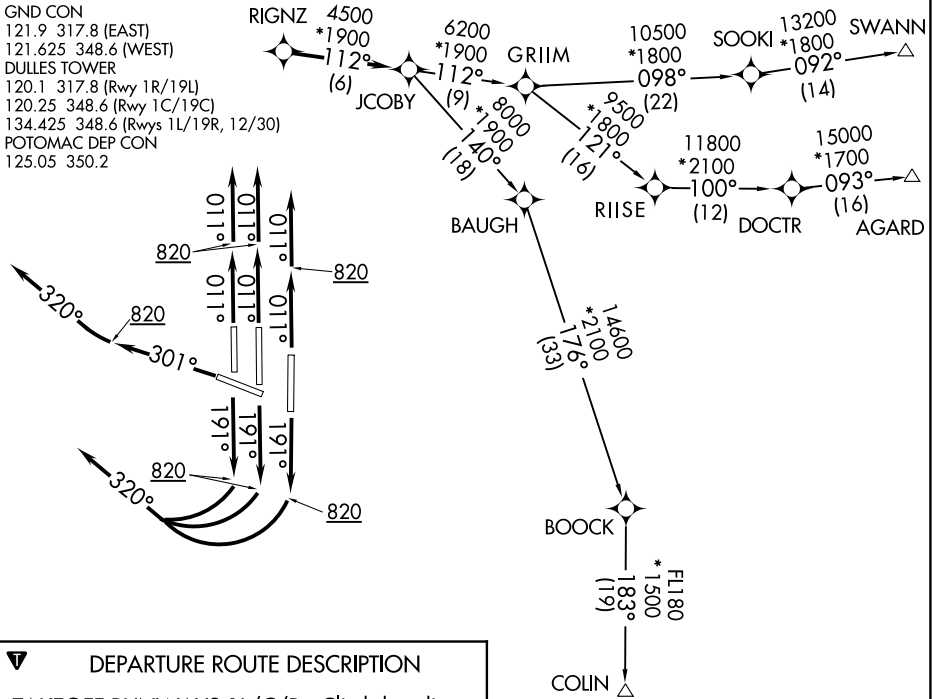


D-ATIS 134.85
CLNC DEL
135.7 317.8
CPDLC
GND CON
121.9 317.8 (EAST)
121.625 348.6 (WEST)
DULLES TOWER
120.1 317.8 (Rwy 1R/19L)
120.25 348.6 (Rwy 1C/19C)
124.425 348.6 (Rwys 1L/19R, 12/30)
POTOMAC DEP CON
125.05 350.2

TOP ALTITUDE:
3000



DEPARTURE ROUTE DESCRIPTION

TAKEOFF RUNWAYS 1L/C/R: Climb heading 011° to 820, then on heading 011° or as assigned by ATC, expect RADAR vectors to RIGNZ, thence....

TAKEOFF RUNWAYS 19L/C/R: Climb heading 191° to 820, then turn right heading 320° or as assigned by ATC, expect RADAR vectors to RIGNZ, thence....

TAKEOFF RUNWAY 30: Climb heading 301° to 820, then turn right heading 320° or as assigned by ATC, expect RADAR vectors to RIGNZ, thence....

....on track 112° to JCOBY. Then on assigned transition. Maintain 3000. Expect clearance to filed altitude within ten (10) minutes after departure.

AGARD TRANSITION (JCOBY3.AGARD):
COLIN TRANSITION (JCOBY3.COLIN):
SWANN TRANSITION (JCOBY3.SWANN):

TAKEOFF MINIMUMS
Rwys 1L/C/R, 19L/C/R, 30:
Standard with minimum climb of 500' per NM to 820.

NOTE: RNAV 1.
NOTE: DME/DME/IRU or GPS required.
NOTE: RADAR required.
NOTE: Turbojets only.
NOTE: COLIN Transition - Part 121 aircraft only.
NOTE: SWANN/AGARD Transitions - Part 121 and Part 129 aircraft only.

NOTE: Chart not to scale.