

JDUBB THREE DEPARTURE (RNAV)

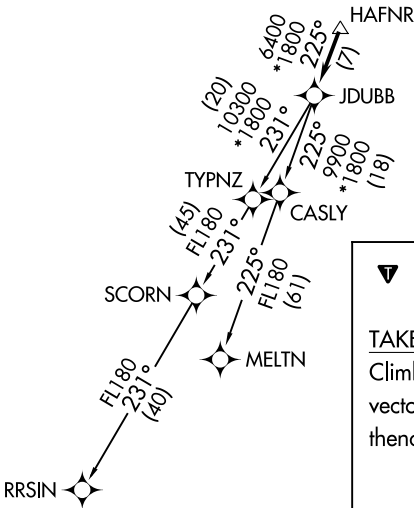
D-ATIS
134.85
CLNC DEL
135.7 317.8
CPDLC
GND CON
121.9 317.8 (EAST)
121.625 348.6 (WEST)
DULLES TOWER
120.1 317.8 (Rwy 1R/19L)
120.25 348.6 (Rwy 1C/19C)
134.425 348.6 (Rwys 1L/19R, 12/30)
POTOMAC DEP CON
126.65 350.2

TOP ALTITUDE:
3000



TAKEOFF MINIMUMS:
Rwys 1L/C/R, 19L/C/R, 30:
Standard with minimum climb
of 500' per NM to 820.

NOTE: RNAV 1.
NOTE: RADAR required.
NOTE: DME/DME/IRU or GPS required.



NOTE: Chart not to scale.

▼ DEPARTURE ROUTE DESCRIPTION

TAKEOFF RWY 1L, 1C, 1R, 19C, 19L, 19R, 30:
Climb on heading assigned by ATC, expect RADAR
vectors to HAFNR, then on track 225° to JDUBB,
thence. . . .

. . . .on assigned transition. Maintain 3000. Expect
clearance to filed altitude within ten (10) minutes
after departure.

MELTN TRANSITION (JDUBB3.MELTN)
RRSIN TRANSITION (JDUBB3.RRSIN)