

APP CRS 191°	Rwy Idg 11089 TDZE 272 Apt Elev 312
------------------------	--

RNAV (RNP) Z RWY 19C
WASHINGTON DULLES INTL (IAD)

▼ GPS required. For uncompensated Baro-VNAV systems, procedure NA below -14°C (6°F) or above 47°C (117°F). For inoperative ALSF, increase RNP 0.30 visibility to 1 3/4. Simultaneous approach authorized with ILS or LOC Rwy 19L, ILS Rwy 19L (Cat II). Use of FD or AP providing RNAV track guidance required during simultaneous operations.

ALSF-2



MISSED APPROACH: Climb to 4000 via track 191° to BOPAC and via track 265° to BLUES and hold.

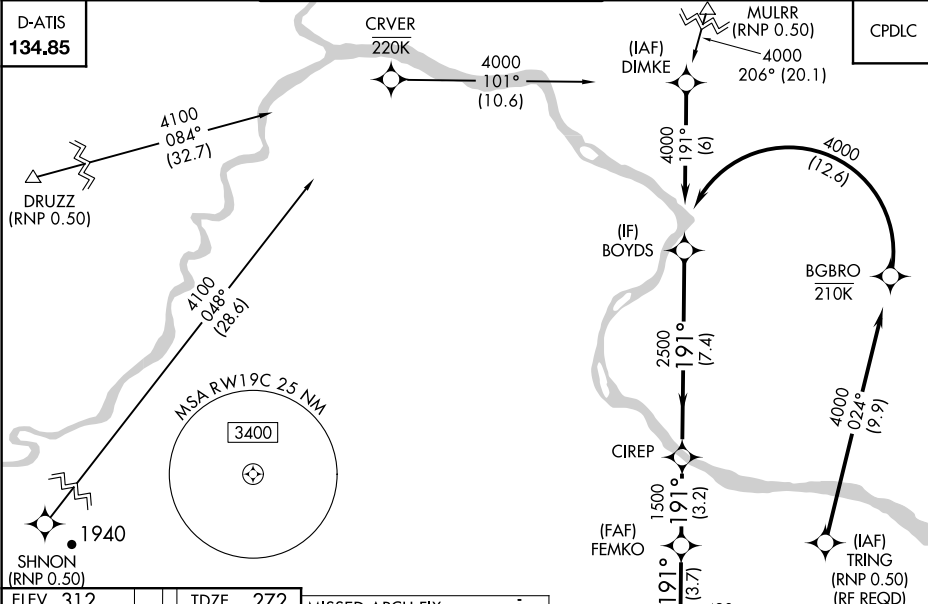
POTOMAC APP CON
120.45 306.925 (241°-330°)
128.525 306.925 (091°-240°)
126.1 338.25 (331°-090°)

DULLES TOWER		
120.1	317.8	(Rwy 1R/19L)
120.25	348.6	(Rwy 1C/19C)
134.425	348.6	(Rwys 1L/19R and 12/30)

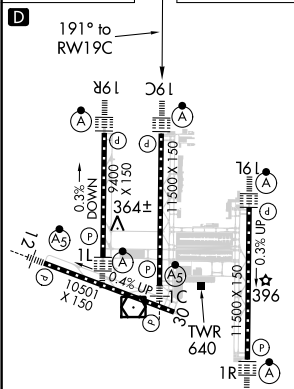
GND CON
121.9 317.8 (EAST)
121.625 348.6 (WEST)

CLNC DEL
135.7 317.8

D-ATIS	134.85
--------	--------

CPDLC

ELEV 312		TDZE 272
----------	--	----------



TDZ/CL 1C, 1L, 1R, 12,
19C and 19R
REIL Rwy 30
HIRL all Rwy's

4000 ↑ tr 191°	BOBAC ✧ tr 265°	BLUES △	CIREP		BOYDS	Procedure Turn NA
VGS1 and RNAV glidepath not coincident (VGS1 Angle 3.00/TCH 72).		FEMKO 1500	1500	2500	4000	GP 3.00° TCH 54
RW19C		3.7 NM	3.2 NM	7.4 NM		
CATEGORY	A	B	C	D		
RNP 0.30 DA	740/60 468 (500-1¼)					

AUTHORIZATION REQUIRED