

WAAS CH 58105 W19A	APP CRS 191°	Rwy Idg 11500 TDZE 302 Apt Elev 312
--	------------------------	--

RNAV (GPS) Y RWY 19L
WASHINGTON DULLES INTL (IAD)

▼ For uncompensated Baro-VNAV systems, LNAV/VNAV NA below -15°C (5°F) or above 48°C (118°F). DME/DME RNP-0.3 NA. Simultaneous approach authorized with ILS or LOC/DME Rwy 19R, ILS Rwy 19R (Cat II), ILS Rwy 19R (Cat III). LNAV procedure NA during simultaneous operations. Use of FD or AP providing RNAV track guidance required during simultaneous operations. **RVR 1800 authorized with use of FD or AP or HUD to DA.

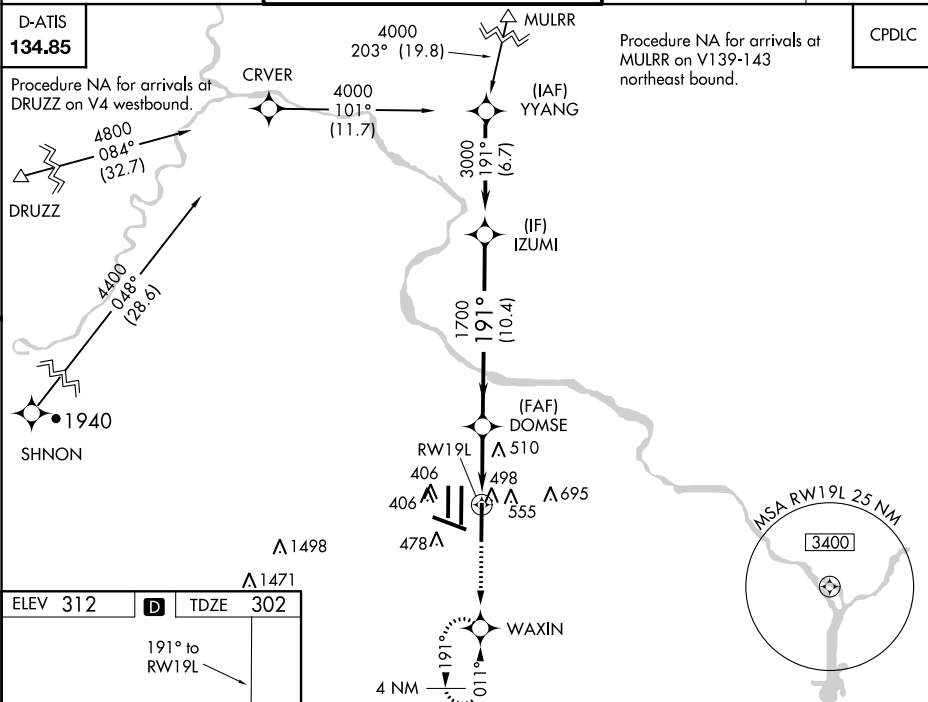
ALSF-2



POTOMAC APP CON	DULLES TOWER	GND CON	CLNC DEL
120.45 306.925 (241°-330°)	120.1 317.8 (Rwy 1R/19L)	121.9 317.8 (EAST)	
128.525 306.925 (091°-240°)	120.25 348.6 (Rwy 1C/19C)	121.625 348.6 (WEST)	135.7 317.8
126.1 338.25 (331°-090°)	134.425 348.6 (Rwys 1L/19R and 12/30)		

D-ATIS	134.85
--------	--------

Procedure NA for arrivals
DRUZZ on V4 westbound.



ELEV 312		TDZE 302
----------	---	----------

2000 ↑	WAXIN ✱	VGSI and RNAV glidepath not coincident (VGSI Angle 3.00/TCH 75).		IZUMI 3000
*INAV only.		DOMSE ✱		Procedure Turn NA
RW19L 1.4		2.8 NM	10.4 NM	GP 3.00° TCH 55
191°		1700		
CATEGORY	A	B	C	D
LPV DA**	502/24 200 (200-½)			
RNAV/ VNAV DA	829/60 527 (600-1¼)			
RNAV MDA	820/24 518 (600-½)	820/50 518 (600-1)	820/60 518 (600-1¼)	
CIRCLING	940-1 628 (700-1)	940-1¾ 628 (700-1¾)	940-2 628 (700-2)	