

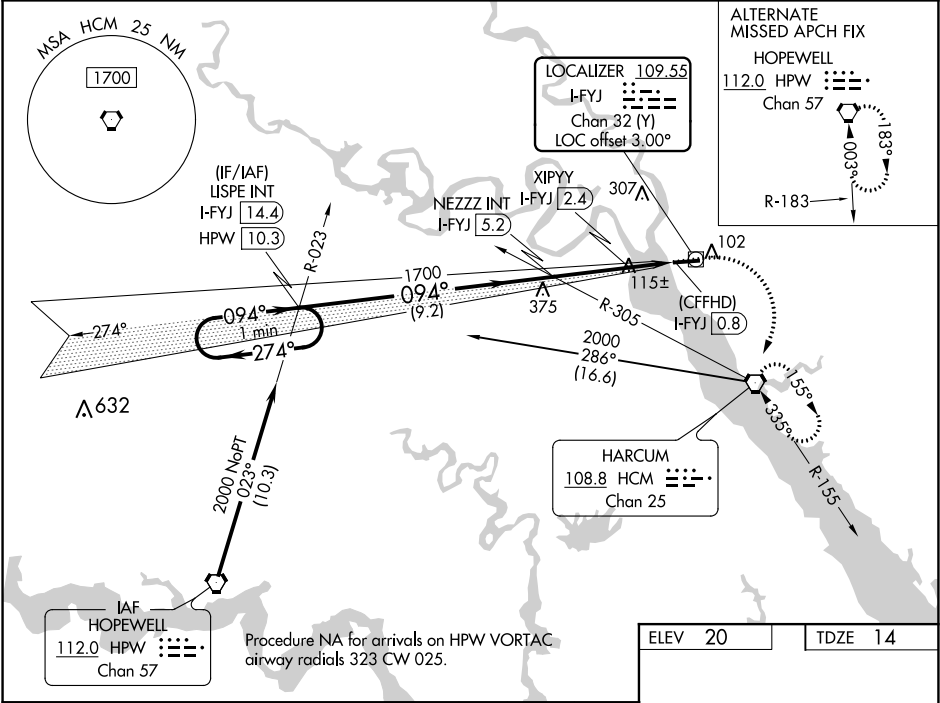
LOC/DME I-FYJ	APP CRS	Rwy Idg	5000
109.55	094°	TDZE	14
Chan 32 (Y)		Apt Elev	20

LOC RWY 10
MIDDLE PENINSULA RGNL (F'YJ)

NA When local altimeter setting not received, use Newport News altimeter setting and increase all MDA 80 feet and increase S-10 Cat B and Circling Cat B visibility ¼ SM. VDP NA when using Newport News altimeter setting.

MISSED APPROACH: Climb to 500 then climbing right turn to 2000 direct HCM VORTAC and hold, continue climb-in-hold to 2000.

AWOS-3 132.825	POTOMAC APP CON 126.4 282.375	UNICOM 123.0 (CTAF) 0
-------------------	----------------------------------	--------------------------



One Minute Holding Pattern	LISPE INT I-FYJ 14.4	NEZZZ INT I-FYJ 5.2	XIPYY I-FYJ 2.4	500	2000	HCM
2000	1700	1700	1700	500	2000	HCM
*760 when using Newport News altimeter setting.	9.2 NM	2.7 NM	0.9 NM	0.8 NM		
CATEGORY	A	B	C	D		
S-10	680-1	666 (700-1)		NA		
CIRCLING	680-1	660 (700-1)		NA		
XIPYY FIX MINIMUMS						
S-10	380-1	366 (400-1)		NA		
CIRCLING	480-1	620-1		NA		
	460 (500-1)	600 (600-1)				

ELEV 20 TDZE 14

094° 4.4 NM from FAF

MIRL Rwy 10-28 0
REIL Rws 10 and 28 0

FAF to MAP 4.4 NM

Knots	60	90	120	150	180
Min:Sec	4:24	2:56	2:12	1:46	1:28

NE-3, 03 DEC 2020 to 31 DEC 2020

NE-3, 03 DEC 2020 to 31 DEC 2020