

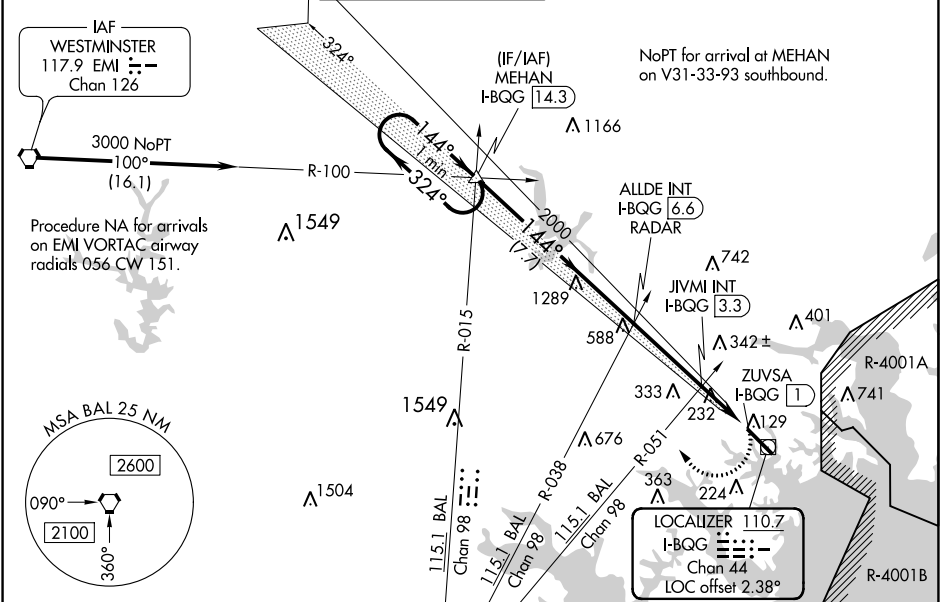
LOC/DME I-BQG	APP CRS	Rwy Idg	6997
110.7	144°	TDZE	22
Chan 44		Apt Elev	22

LOC RWY 15  
MARTIN STATE (MTN)

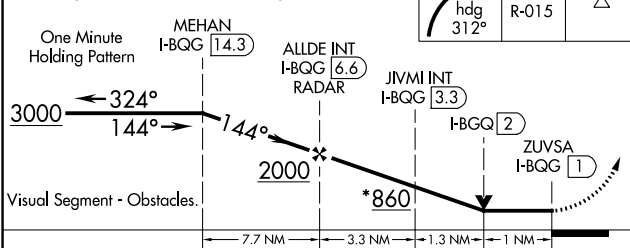
When local altimeter setting not received, use Baltimore/Washington Intl Thurgood Marshall altimeter setting and increase all MDA 60 feet and increase S-15 Cat A and Circling Cats C and D visibility ¼ mile and increase JIVMI Fix Minimums S-15 Cats C and D visibility ½ mile and Circling Cat D visibility ¼ mile. Rwy 15 helicopter visibility reduction below ¾ SM NA.

MISSED APPROACH: Climbing right turn to 3000 on heading 312° and BAL VORTAC R-015 to MEHAN INT/I-BQG 14.3 DME and hold.

ATIS	POTOMAC APP CON	MARTIN TOWER *	GND CON	CLNC DEL	UNICOM
124.925	119.0 282.275	121.3(CTAF) 0 254.425	121.8 253.4	121.8 (when twr closed)	122.95



\*920 when using Baltimore/Washington Intl Thurgood Marshall altimeter setting.



CATEGORY	A	B	C	D
S-15	860-1 838 (900-1)	860-1¼ 838 (900-1¼)	860-2½ 838 (900-2½)	838 (900-2½)
CIRCLING	860-1¼ 838 (900-1¼)	838 (900-1¼)	860-2½ 838 (900-2½)	860-2¾ 838 (900-2¾)
JIVMI FIX MINIMUMS (DUAL VOR RECEIVERS OR DME REQUIRED)				
S-15	500-1 478 (500-1)	500-1¾ 478 (500-1¾)	500-1¾ 478 (500-1¾)	478 (500-1¾)
CIRCLING	560-1 538 (600-1)	538 (600-1)	560-1½ 538 (600-1½)	680-2 658 (700-2)

ELEV	22	TDZE	22
3000	hdg 312°	BAL R-015	MEHAN
144° 5.6 NM from FAF			
HIRL Rwy 15-33			
REIL Rws 15 and 33			
Rwy 33 Idg 8100' (Military Operations Only)			
Rwy 15 take-off 8100' (Military Operations Only)			
FAF to MAP 5.6 NM			
Knots	60	90	120 150 180
Min:Sec	5:36	3:44	2:48 2:14 1:52

NE-3, 03 DEC 2020 to 31 DEC 2020

NE-3, 03 DEC 2020 to 31 DEC 2020