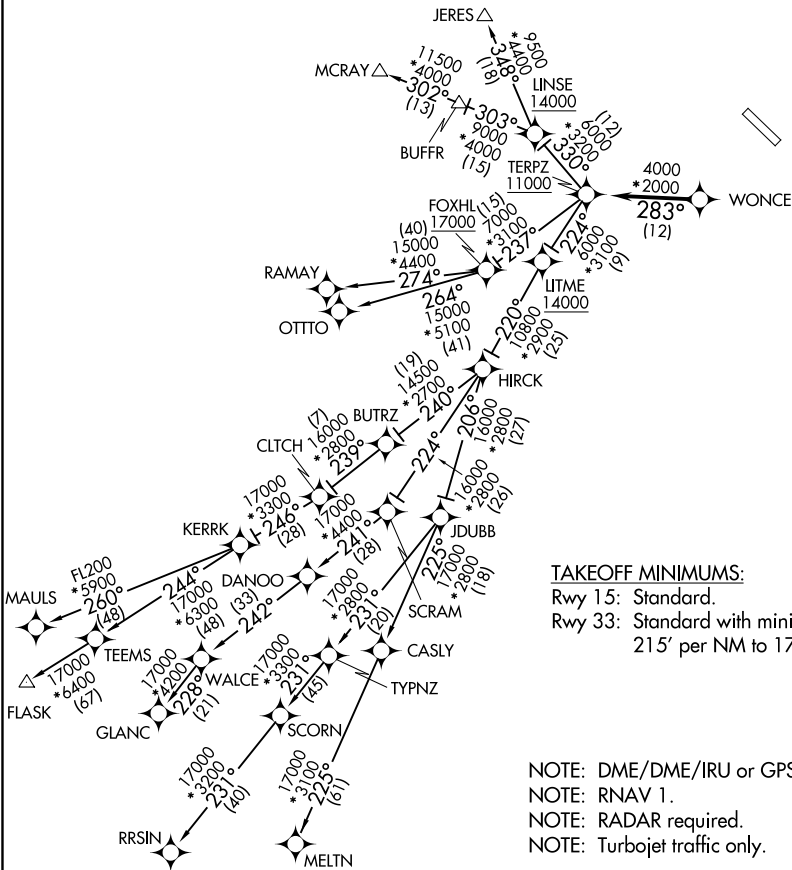


ATIS
124.925
CLNC DEL
121.8 (when twr closed)
GND CON
121.8 253.4
MARTIN TOWER ★
121.3 (CTAF) 254.425
UNICOM
122.95
POTOMAC DEP CON
119.7 290.475

TOP ALTITUDE:
RAMAY, OTTTO, MAULS, FLASK,
RRSIN, GLANC, MELTN
TRANSITIONS: 17000
JERES, MCRAIY TRANSITIONS:
16000



TAKEOFF MINIMUMS:
Rwy 15: Standard.
Rwy 33: Standard with minimum climb of 215' per NM to 1700.

NOTE: DME/DME/IRU or GPS required.
NOTE: RNAV 1.
NOTE: RADAR required.
NOTE: Turbojet traffic only.

NOTE: Chart not to scale.