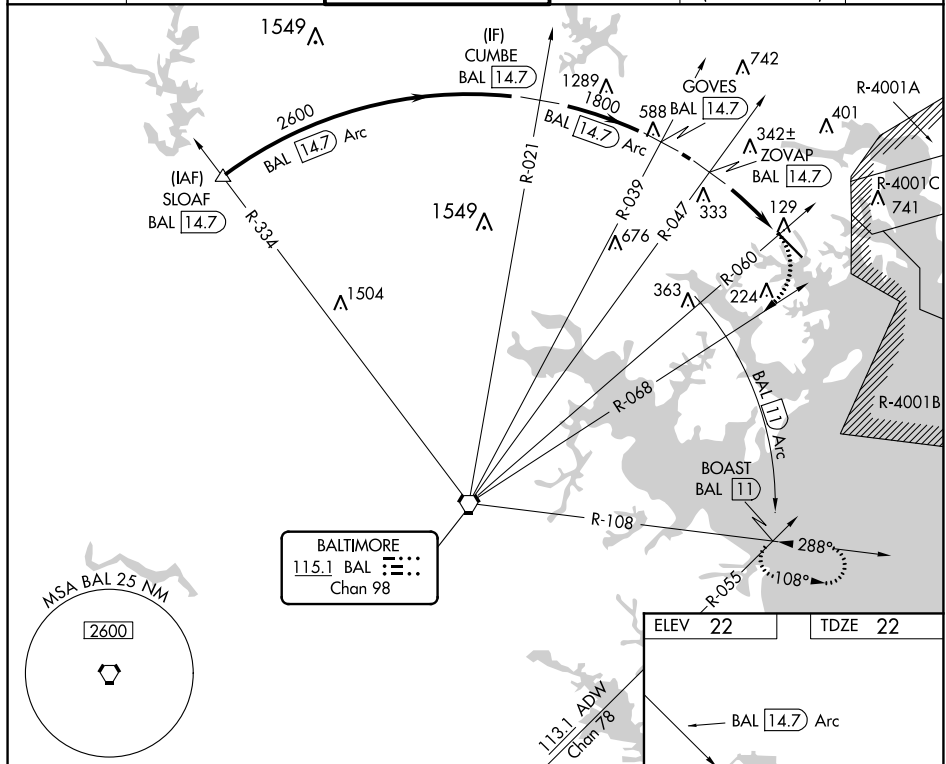


VOR or TACAN RWY 15  
MARTIN STATE (MTN)

**MISSED APPROACH:** Climbing right turn to 2500 on BAL VORTAC R-068 and BAL 11 DME Arc clockwise to BOAST INT/BAL 11 DME and hold.

**MISSED APPROACH:** Climbing right turn to 2500 on BAL VORTAC R-068 and BAL 11 DME Arc clockwise to BOAST INT/BAL 11 DME and hold.

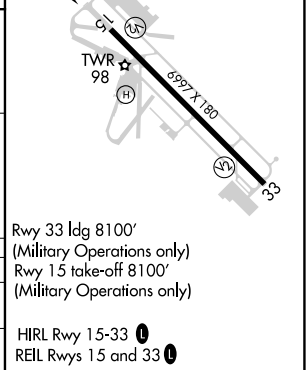
ATIS 124.925	POTOMAC APP CON 119.0 282.275	MARTIN TOWER * 121.3(CTAF) 0 254.425	GND CON 121.8 253.4	CLNC DEL 121.8 (when twr closed)	UNICOM 122.95
-----------------	----------------------------------	---	------------------------	--	------------------



The diagram illustrates a nuclear reactor system with the following components and parameters:

- Primary Loop:**
  - Reactor Core: R-068
  - Steam Generator: SG
  - Condenser: C-068
  - Pump: P-068
  - Flow Rate: 2500
  - Pressure: BAL 14.7
- Secondary Loop:**
  - Steam Generator: SG
  - Turbine: T-068
  - Condenser: C-068
  - Pump: P-068
  - Flow Rate: 1800
  - Pressure: BAL 14.7
- Feedwater System:**
  - Feedwater Pump: P-068
  - Feedwater Heater: F-068
  - Flow Rate: 1260
  - Pressure: BAL 14.7
- Other Components:**
  - BOAST INT
  - GOVES BAL 14.7
  - CUMBE BAL 14.7
  - SLOAF BAL 14.7
  - ZOVAP BAL 14.7
  - BAL R-060 14.7
  - BAL 11 Arc CW

CATEGORY	A	B	C	D
S-15	920-1¼	898 (900-1¼)	920-2½	898 (900-2½)
CIRCLING	920-1¼	898 (900-1¼)	920-2¾ 898 (900-2¾)	920-3 898 (900-3)



NE-3, 03 DEC 2020 to 31 DEC 2020