

LOC I-HSP <u>108.7</u>	APP CRS 247°	Rwy Idg 5600 TDZE 3773 Apt Elev 3793
----------------------------------	------------------------	---

ILS or LOC RWY 25
INGALLS FIELD (HSP)

DME required.

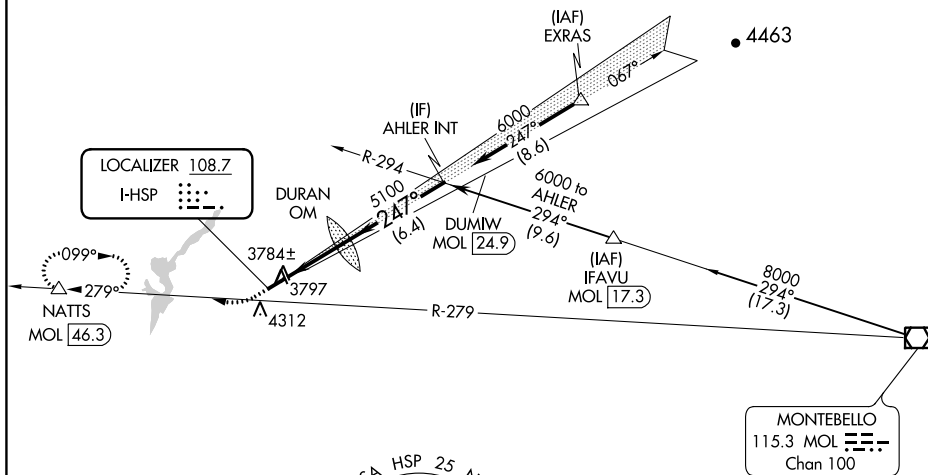
T	Circling to Rwy 7 NA at night.
A NA	Circling NA southeast of Rwy 7-25.

MISSED APPROACH: Climb to 4360, then climbing right turn to 6200 on heading 270° and MOL R-279 to NATTS/MOL 46.3 DME and hold. (DME required).

AWOS-3
118.8

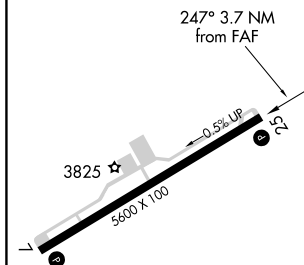
WASHINGTON CENTER
134.4 353.9

UNICOM
123.0 (CTAF) **L**



NE-3, 03 DEC 2020 to 31 DEC 2020

ELEV 3793		TDZE 3773
-----------	--	-----------



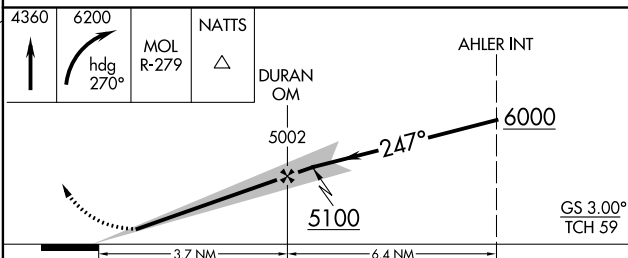
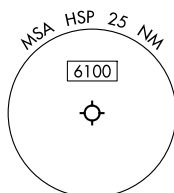
REIL Rwy 25 **L**
HIRL Rwy 7-25 **L**


FAF to MAP 3.7 NM

Knots	60	90	120	150	180
Min:Sec	3:42	2:28	1:51	1:29	1:14

HOT SPRINGS, VIRGINIA

Amdt 5 15AUG19



CATEGORY	A	B	C	D
S-ILS 25	4073- $\frac{7}{8}$ 300 (300- $\frac{7}{8}$)			
S-LOC 25	4240-1	467 (500-1)	4240-1 $\frac{1}{8}$	467 (500-1 $\frac{1}{8}$)
 CIRCLING	4440-1 647 (700-1)	4480-1 687 (700-1)	4480-1 $\frac{1}{2}$ 687 (700- $\frac{1}{2}$)	4480-2 $\frac{1}{4}$ 687 (700-2 $\frac{1}{4}$)

INGALLS FIELD (HSP)

ILS or LOC RWY 25