

WAAS CH 63021 W23A	APP CRS 229°	Rwy Idg TDZE Apt Elev 5047 775 775
--	------------------------	--

RNAV (GPS) RWY 23

GREATER CUMBERLAND RGNL (CBE)

⚠

⚠

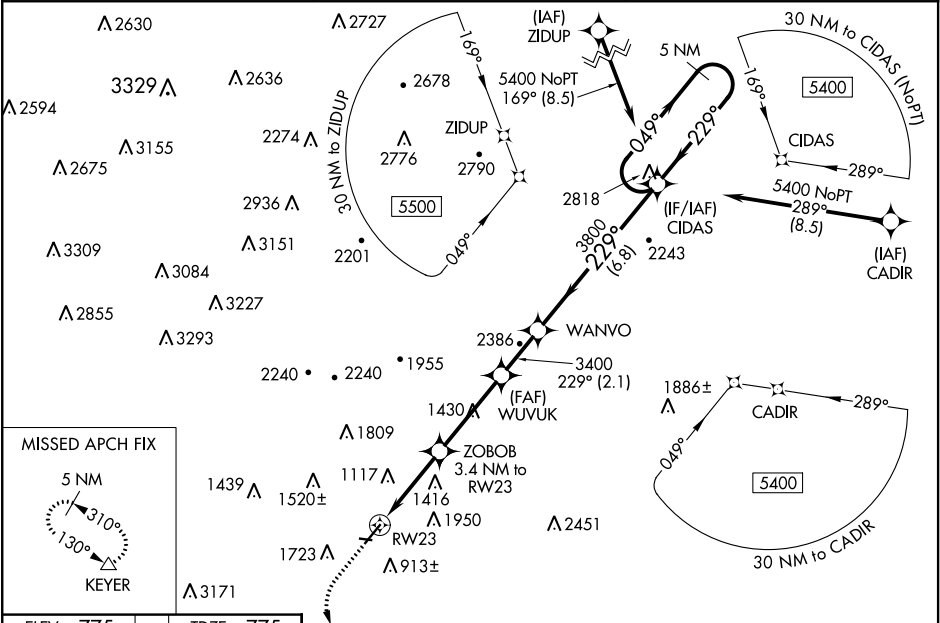
⚠

-15°C

Circling NA NW of Rwy 5-23. Baro-VNAV and VDP NA when using Winchester altimeter setting. For uncompensated Baro-VNAV systems, LNAV/VNAV NA below -16°C (5°F) or above 54°C (130°F). DME/DME RNP-0.3 NA. When local altimeter setting not received, use Winchester altimeter setting and increase all DAs/MDAs 100 feet; increase all LPV visibilities ¼ SM. Rwy 5, 29 helicopter visibility reduction below 1 SM NA. Circling Rwy 5, 29 NA at night. # Missed approach requires minimum climb of 424 feet per NM to 1950.

MISSED APPROACH: Climb to 1220 then climbing left turn to 5000 direct KEYER and hold, continue climb-in-hold to 5000.

AWOS-3 128.625	JOHNSTOWN APP CON ★ 121.2 299.2	UNICOM 122.8 (CTAF) 0
--------------------------	---	---------------------------------



ELEV 775	TDZE 775	1220	5000	KEYER	VGSI and RNAV glidepath not coincident (VGSI Angle 3.59/TCH 29).	CIDAS	5 NM Holding Pattern
229° to RW23		* LNAV only.		ZOBBOB 3.4 NM to RW23	WUVUK 3400	WANVO	049° → 5400
229° to RW23		* 2.6 NM to RW23		* 2080	3400	3800	← 229°
229° to RW23		2.6 NM		0.8 NM	3.5 NM	2.1 NM	6.8 NM
229° to RW23		CATEGORY		A		B	
229° to RW23		#LPV		DA		NA	
229° to RW23		LPV		DA		1025-¾ 250 (300-¾)	
229° to RW23		LNAV/VNAV		DA		1930-4 1155 (1200-4)	
229° to RW23		LNAV		MDA		1780-1¼ 1005 (1100-1¼)	
229° to RW23		CIRCLING		1780-1¼ 1005 (1100-1¼)		2140-1½ 1365 (1400-1½)	