

WAAS
CH **99336**
W05A

APP CRS
029°

Rwy Idg
TDZE **746**
Apt Elev **775**

RNAV (GPS) RWY 5
GREATER CUMBERLAND RGNL (CBE)

RNP APCH.

▼

⚠

❄ -15°C

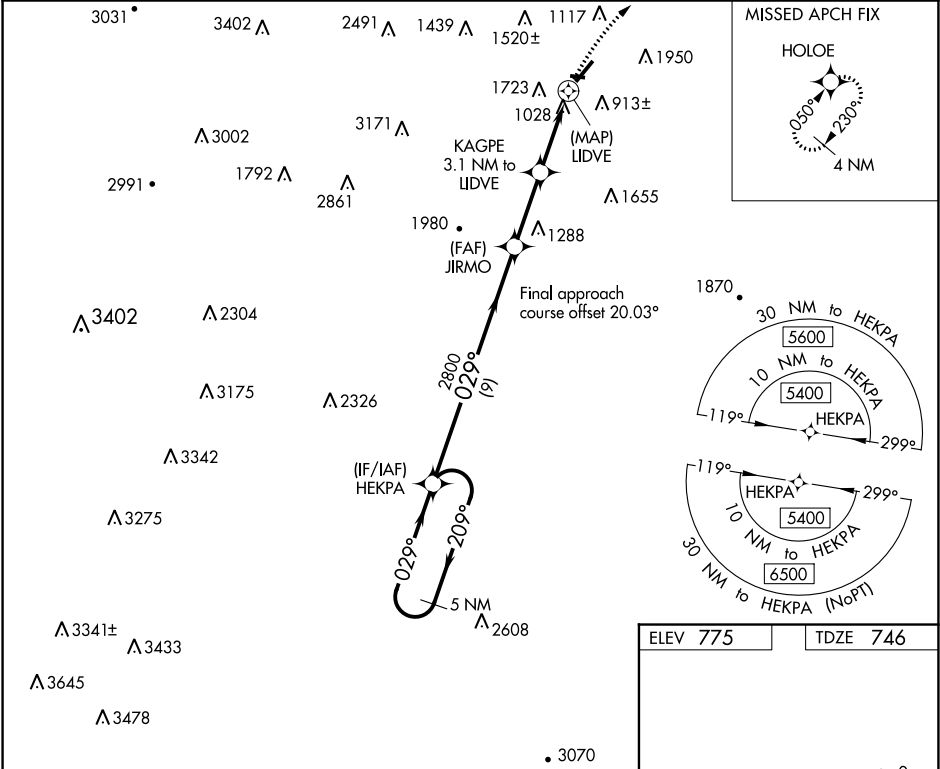
Circling NA NW of Rwy 5-23. When local altimeter setting not received, use Winchester altimeter setting and increase all MDA 100 feet and increase LP visibility Cat B ¼ mile, Cats C and D ½ mile. Rwy 5 helicopter visibility reduction below 1 SM NA. Procedure NA at night.

MISSED APPROACH: Climbing right turn to 4500 direct HOLOE and hold, continue climb-in-hold to 4500.

AWOS-3
128.625

JOHNSTOWN APP CON ★
121.2 299.2

UNICOM
122.8 (CTAF) 0



5 NM Holding Pattern

HEKPA

Visual Segment - Obstacles.

4500

HOLOE

5400

209°

029°

029°

2800

1900

LIDVE

9 NM

2.8 NM

3.1 NM

0.5 NM

CATEGORY	A	B	C	D
LP MDA	1440-1	694 (700-1)	1440-2	694 (700-2)
LNAV MDA	1840-1¼ 1094 (1100-1¼)	1840-1½ 1094 (1100-1½)	1840-3	1094 (1100-3)
CIRCLING	1840-1¼ 1065 (1100-1¼)	2140-1½ 1365 (1400-1½)	2260-3 1485 (1500-3)	2360-3 1585 (1600-3)

ELEV 775

TDZE 746

REIL Rwy 23 0

LIRL Rwy 11-29 0

HIRL Rwy 5-23 0