

WAAS CH 40413 W32A	APP CRS 325°	Rwy ldg 4074 TDZE 11 Apt Elev 11
--	------------------------	---

RNAV (GPS) RWY 32

OCEAN CITY MUNI (OXB)

RNP APCH.

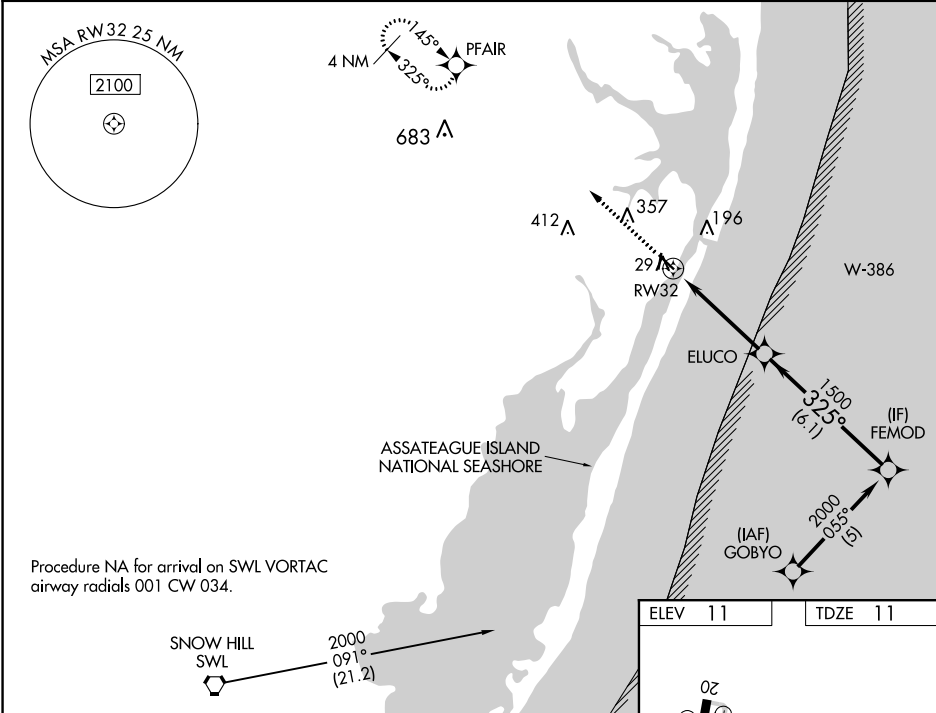
▼

▲

For uncompensated Baro-VNAV systems, LNAV/VNAV NA below -15°C or above 48°C.
Baro-VNAV and VDP NA when using Salisbury altimeter setting. When local altimeter setting not received, use Salisbury altimeter setting: increase LPV DA to 309 feet, LNAV/VNAV DA to 337 feet; increase all MDAs 60 feet and visibility Cat C ¼ SM.

MISSED APPROACH:
Climb to 2000 direct
PFAIR and hold.

ASOS 119.025	PATUXENT APP CON ★ 127.95 314.0	CLNC DEL 121.75	UNICOM 123.05 (CTAF) 0
------------------------	---	---------------------------	----------------------------------



2000
↑
PFAIR

*LNAV only

*1.1 NM to RW32

ELUCO
1500

FEMOD
2000

Procedure Turn NA

GP 3.00°
TCH 40

1.1 3.4 6.1

CATEGORY	A	B	C	D
LPV DA		261-1	250 (300-1)	
LNAV/VNAV DA		289-1	278 (300-1)	
LNAV MDA		380-1	369 (400-1)	380-1¼ 369 (400-1¼)

REIL Rws 2 and 20 0
MIRL Rws 2-20 and 14-32 0

72
320 X 75
4074 X 75
101±
2
1
32
29±
325° to RW32

NE-3, 03 DEC 2020 to 31 DEC 2020

NE-3, 03 DEC 2020 to 31 DEC 2020