

LOC/DME I-JYO 111.75 Chan 54 (Y)	APP CRS 171°	Rwy Idg TDZE Apt Elev	5500 383 389
--	------------------------	-----------------------------	---

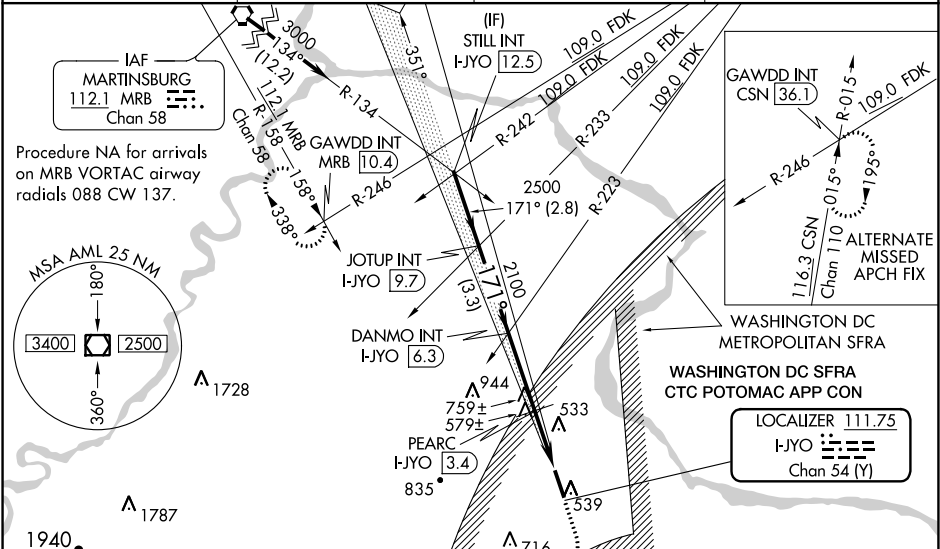
ILS or LOC RWY 17
LEESBURG EXECUTIVE (JYO)

⚠ NA When VGSi inop, Straight-in/Circling Rwy 17 procedure NA at night. Inoperative table does not apply to S-LOC 17 Cats A/C and PEARC Fix minimums S-LOC 17 Cats A/B. For inoperative ODALS, increase PEARC Fix minimums S-LOC 17 Cats C/D visibility to 1 $\frac{1}{2}$ miles. Visibility reduction by helicopters NA. When local altimeter setting not received, use Washington Dulles Intl altimeter setting; increase all DA 32 feet; increase all MDA 40 feet and PEARC Fix minimums S-LOC 17 Cats C/D visibility $\frac{1}{2}$ mile and Circling Cats C/D and PEARC Fix minimums Circling Cat D visibility $\frac{1}{4}$ mile; inoperative table does not apply to S-LOC 17 Cat C and PEARC Fix minimums S-LOC 17 Cats A/B/C.

ODALS

MISSED APPROACH: Climb to 1200 then climbing right turn to 4000 on heading 340° and MRB VORTAC R-158 to GAWDD INT/MRB 10.4 DME and hold, continue climb-in hold to 4000.

AWOS-3 125.225	POTOMAC APP CON 126.1 338.25	CLNC DEL 118.55	UNICOM 122.975 (CTAF) ①
--------------------------	--	---------------------------	--



ELEV **389** TDZE **383**

171° 5.3 NM from FAF

5500x100

35

REIL Rws 17 and 35 ①

HIRL Rwy 17-35 ①

FAF to MAP 5.3 NM

Knots	60	90	120	150	180
Min:Sec	5:18	3:32	2:39	2:07	1:46

STILL INT I-JYO 12.5		*1280 when using Washington Dulles Intl altimeter setting.		1200	4000	MRB R-158	GAWDD INT
JOTUP INT I-JYO 9.7		DANMO INT I-JYO 6.3		2100	2100	PEARC I-JYO 3.4	I-JYO 1.1
3000		171°		2500	2100	*1240	
GS 3.00° TCH 45		2.8 NM		3.3 NM	2.9 NM	2.3 NM	* LOC only
CATEGORY	A	B	C	D			
S-ILS 17	633-1			250 (300-1)			
S-LOC 17	1240-1	857 (900-1)	1240-2 $\frac{1}{2}$	857 (900-2 $\frac{1}{2}$)			
CIRCLING	1240-1 $\frac{1}{4}$	851 (900-1 $\frac{1}{4}$)	1240-2 $\frac{1}{2}$	851 (900-2 $\frac{1}{2}$)	1240-2 $\frac{3}{4}$	851 (900-2 $\frac{3}{4}$)	
PEARC FIX MINIMUMS							
S-LOC 17	840-1	457 (500-1)	840-1 $\frac{1}{4}$	457 (500-1 $\frac{1}{4}$)			
CIRCLING	840-1	451 (500-1)	860-1 $\frac{1}{2}$	471 (500-1 $\frac{1}{2}$)	1040-2	651 (700-2)	

NE-3, 03 DEC 2020 to 31 DEC 2020

NE-3, 03 DEC 2020 to 31 DEC 2020