

WAAS CH 60902 W17A	APP CRS 171°	Rwy Idg 5500
	TDZE 383	
	Apt Elev 389	

RNAV (GPS) RWY 17

LEESBURG EXECUTIVE (JYO)

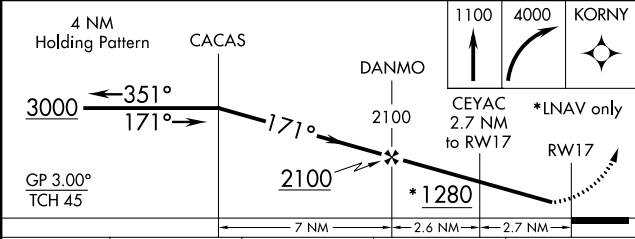
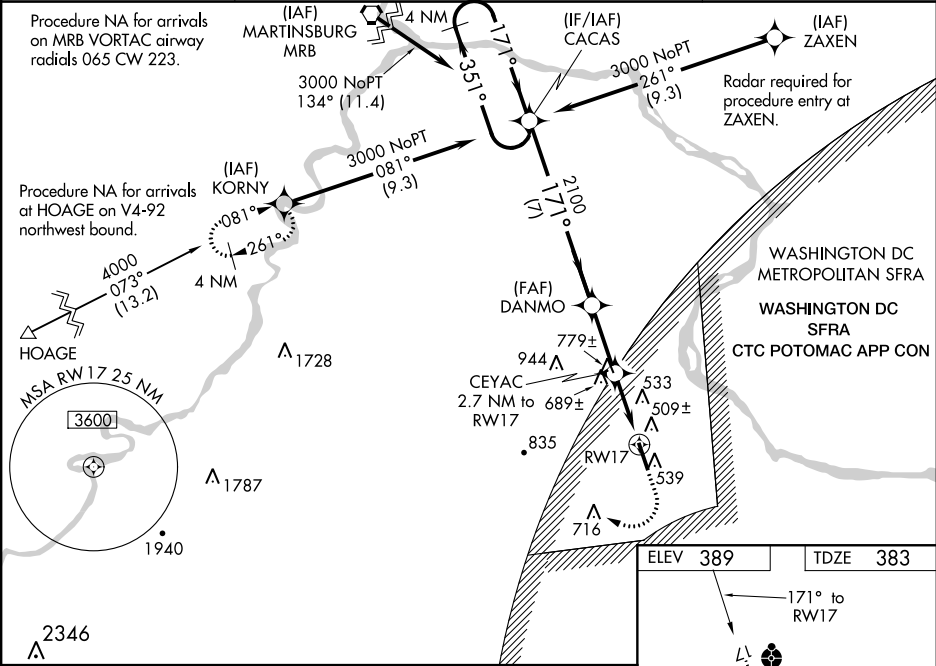
When VGSi inop, Straight-in/Circling Rwy 17 procedure NA at night. DME/DME RNP-0.3 NA. Visibility reduction by helicopters NA. For uncompensated Baro-VNAV systems, LNAV/VNAV NA below -15°C (5°F) or above 41°C (105°F). Inoperative table does not apply to LNAV Cats A/B.

For inoperative ODALS, increase LNAV/VNAV all Cats visibility to 1½ and LNAV Cats C/D visibility to 1¾. When local altimeter setting not received, use Washington Dulles Intl altimeter setting; increase all DA 32 feet and LNAV/VNAV all Cats visibility ½ mile; increase all MDA 40 feet and LNAV Cats C/D and Circling Cat C visibility ½ mile and Circling Cat D visibility ¾ mile. When using Washington Dulles Intl altimeter setting, inoperative table does not apply to LNAV Cats A/B. For inoperative ODALS when using Washington Dulles Intl altimeter setting: increase LNAV/VNAV all Cats visibility to 1¼ and LNAV Cats C/D visibility to 1¾. Baro-VNAV NA when using Washington Dulles Intl altimeter setting.

ODALS

MISSED APPROACH: Climb to 1100 then climbing right turn to 4000 direct KORNÝ and hold.

AWOS-3 125.225	POTOMAC APP CON 126.1 338.25	CLNC DEL 118.55	UNICOM 122.975 (CTAF)
--------------------------	--	---------------------------	---------------------------------



CATEGORY	A	B	C	D
LPV DA		633-1	250 (300-1)	
LNAV/VNAV DA		725-1	342 (400-1)	
LNAV MDA	940-1	557 (600-1)	940-1½	557 (600-1½)
CIRCLING	940-1	551 (600-1)	940-1½ 551 (600-1½)	1040-2 651 (700-2)

