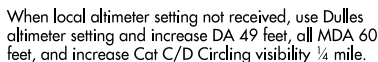


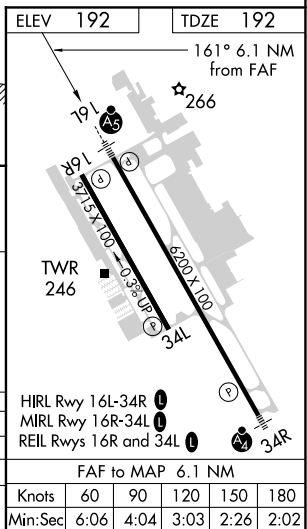
ILS or LOC RWY 16L
MANASSAS RGNL/HARRY P DAVIS FIELD (HEF)



MISSED APPROACH: Climb to 700, then climbing right turn to 3000 direct CSN VORTAC and hold.

ATIS 125.175	POTOMAC APP CON 128.525 306.925	MANASSAS TOWER ★ 133.1 (CTAF) 0 360.75	GND CON 121.8	CLNC DEL 120.2
-----------------	------------------------------------	---	------------------	-------------------

Diagram illustrating a radar display showing a target (marked with a cross) at a range of 1300 yards and a bearing of 161 degrees from the GIGEY INT RADAR. The target is also identified by the DORGE INT RADAR at a range of 2200 yards. The target is moving towards the GIGEY INT RADAR at a speed of 3.00° TCH 58. The target is also identified by the JUKIK INT RADAR at a range of 1300 yards. The target is moving towards the JUKIK INT RADAR at a speed of 3.4 NM. The target is also identified by the S-LOC 16L at a range of 1300 yards. The target is moving towards the S-LOC 16L at a speed of 3.4 NM. The target is also identified by the S-ILS 16L at a range of 1300 yards. The target is moving towards the S-ILS 16L at a speed of 3.4 NM. The target is also identified by the CIRCLING at a range of 1300 yards. The target is moving towards the CIRCLING at a speed of 3.4 NM. The target is also identified by the 720-1 at a range of 1300 yards. The target is moving towards the 720-1 at a speed of 3.4 NM. The target is also identified by the 740-1 at a range of 1300 yards. The target is moving towards the 740-1 at a speed of 3.4 NM. The target is also identified by the 840-134 at a range of 1300 yards. The target is moving towards the 840-134 at a speed of 3.4 NM. The target is also identified by the 880-214 at a range of 1300 yards. The target is moving towards the 880-214 at a speed of 3.4 NM.



38°43'N-77°31'W

ILS or LOC RWY 16L