

WAAS
CH **78035**
W16B

APP CRS
161°

Rwy ldg **3715**
TDZE **186**
Apt Elev **192**

RNAV (GPS) RWY 16R

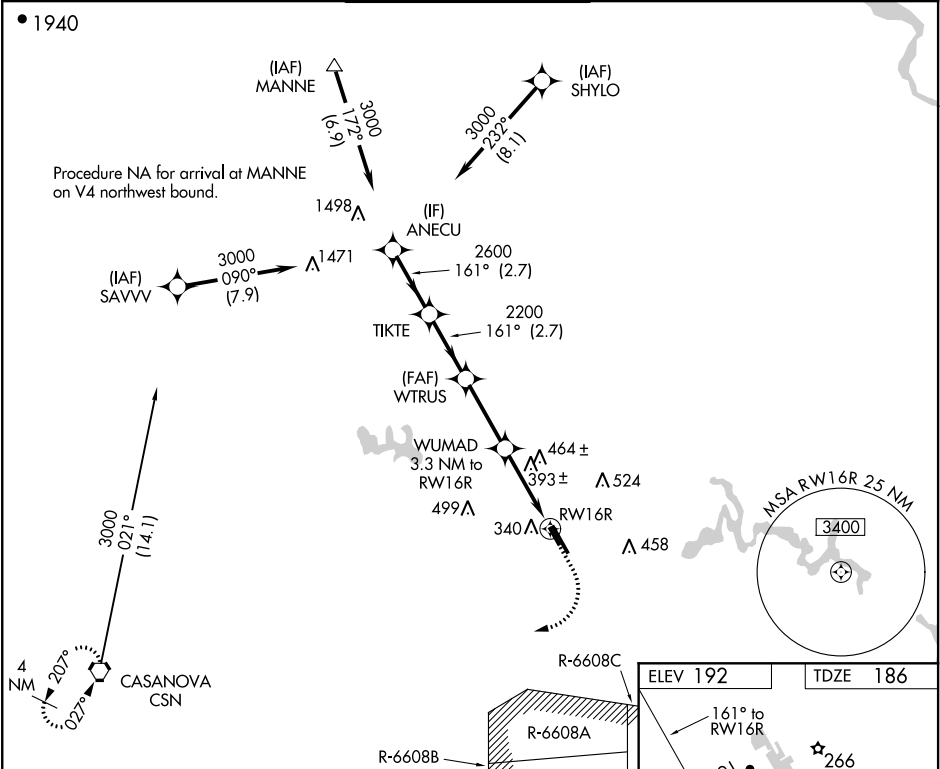
MANASSAS RGNL/HARRY P DAVIS FIELD (HEF)

RNP APCH. RADAR required.

▼ Rwy 16R helicopter visibility reduction below ¾ SM NA. For uncompensated Baro-VNAV systems, LNAV/VNAV NA below -15°C or above 54°C.

MISSED APPROACH: Climb to 700 then climbing right turn to 3000 direct CSN VORTAC and hold.

ATIS	POTOMAC APP CON	MANASSAS TOWER ★	GND CON	CLNC DEL
125.175	128.525 306.925	133.1 (CTAF) 0 360.75	121.8	120.2



CATEGORY		A	B	C	D
LPV DA		494-1		308 (400-1)	
LNAV/VNAV DA		675-1½		489 (500-1½)	
LNAV MDA		660-1	474 (500-1)	660-1¾	474 (500-1¾)
CIRCLING	720-1	740-1	840-1¾	880-2¼	
	528 (600-1)	548 (600-1)	648 (700-1¾)	688 (700-2¼)	