

APP CRS
180°

Rwy Idg
TDZE
Apt Elev
N/A
N/A
329

RNAV (GPS)-A
BRUNSWICK COUNTY AIRPORT (LVL)

RNP APCH.

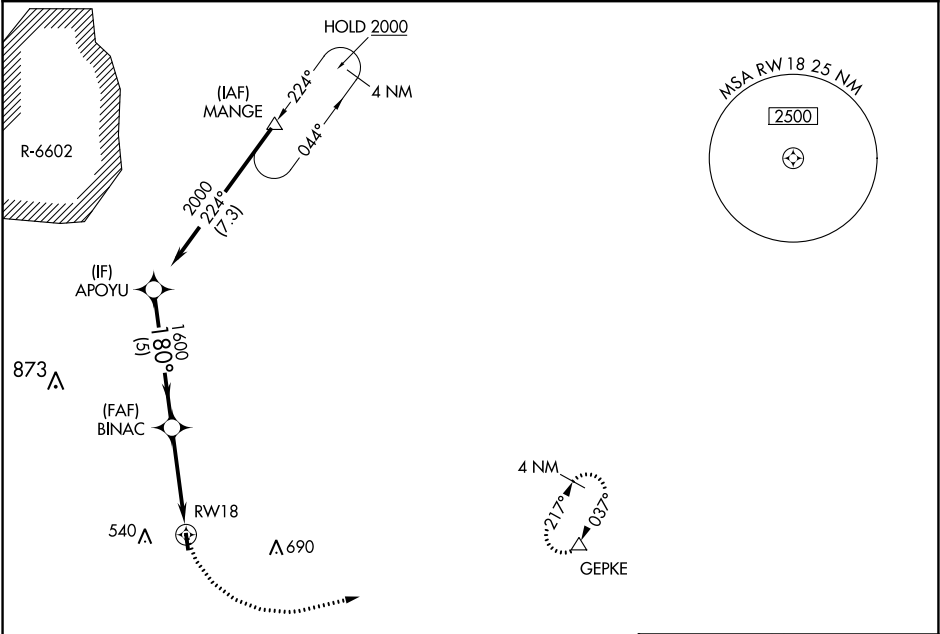
▼

▲

Procedure NA at night. Helicopter visibility reduction below 1 SM NA. When local altimeter setting not received, use South Hill altimeter setting and increase all MDA 60 feet.

MISSED APPROACH: Climbing left turn to 4000 direct GEPKE and hold, continue climb-in-hold to 4000.

AWOS-3 119.625	WASHINGTON APP CON 118.75 377.1	UNICOM 122.8 (CTAF) 0
--------------------------	---	--



ELEV 329

180° to RW18

8 L

3000 x 50

0.6% UP

36

APOYU

Visual Segment - Obstacles.

4000

GEPKE

2000

180°

BINAC

1600

RW18

5 NM

3.9 NM

CATEGORY	A	B	C	D
CIRCLING	1340-3	1011 (1100-3)	NA	

MRL Rwy 18-36 **0**