

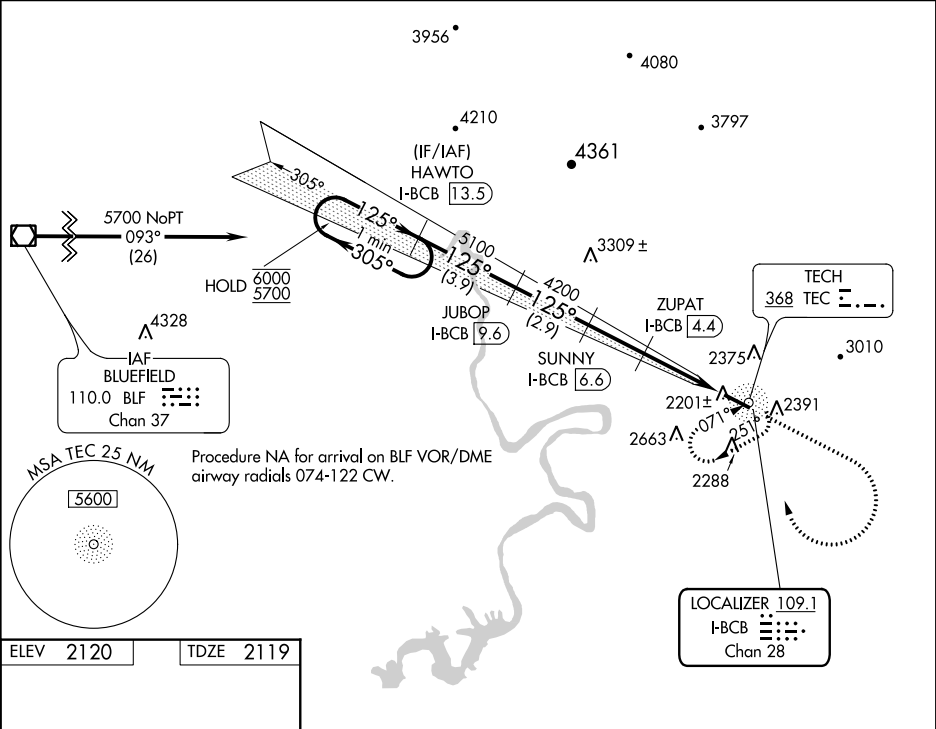
LOC/DME I-BCB	APP CRS	Rwy Idg	5501
109.1	125°	TDZE	2119
Chan 28		Apt Elev	2120

LOC RWY 13

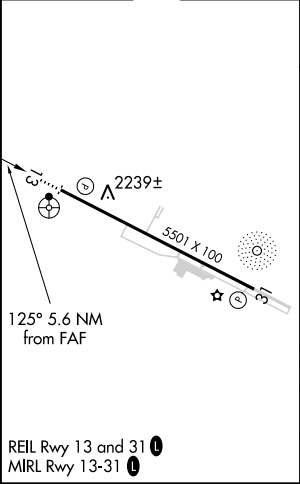
VIRGINIA TECH/MONTGOMERY EXECUTIVE (BCB)

ADF and DME required.	ODALS	MISSED APPROACH: Climb to 3600 then climbing right turn to 5700 direct TEC NDB and hold, continue climb-in-hold to 5700.
<div><div>▼</div><div>▲ NA</div></div> Rwy 13 helicopter visibility reduction below 1 SM NA. Inop table does not apply.	<div><div>⬆</div><div>⋮</div></div>	

AWOS-3	ROANOKE APP CON	CLNC DEL	UNICOM
133.325	126.9 339.8	124.85	123.05 (CTAF) 0



ELEV 2120	TDZE 2119
-----------	-----------



One Minute Holding Pattern				3600	5700	TEC
HAWTO I-BCB 13.5				↑	↷	
JUBOP I-BCB 9.6						
SUNNY I-BCB 6.6						
ZUPAT I-BCB 4.4						
6000 ← 305°						
5700 → 125°						
5100						
4200						
3380						
3.44° TCH 55'						
I-BCB 1.9 I-BCB 1.1						
← 3.9 NM → 2.9 NM → 2.2 NM → 2.5 NM → 0.8						
CATEGORY	A	B	C	D		
S-13	2480-1 361 (400-1)			NA		
CIRCLING	2760-1 640 (700-1)	2820-1 700 (700-1)	2980-2½ 860 (900-2½)	NA		