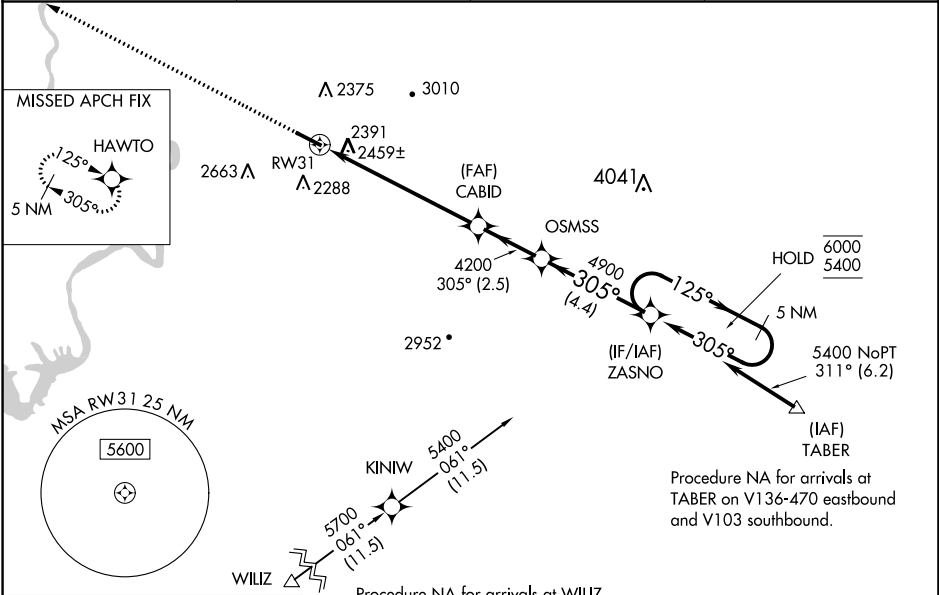


WAAS CH <b>86743</b> <b>W31A</b>	APP CRS <b>305°</b>	Rwy Idg TDZE <b>2120</b> Apt Elev <b>2120</b>	<b>5501</b>
--	------------------------	---	-------------

RNAV (GPS) RWY 31  
VIRGINIA TECH/MONTGOMERY EXECUTIVE (BCB)

RNP APCH.	MISSED APPROACH: Climb to 5900 direct HAWTO and hold, continue climb-in-hold to 5900.
<p>▼ Rwy 31 helicopter visibility reduction below ¾ SM NA. ▲ For uncompensated Baro-VNAV systems, LNAV/VNAV NA below -19°C or above 54°C.</p>	

AWOS-3 <b>133.325</b>	ROANOKE APP CON <b>126.9 339.8</b>	CLNC DEL <b>124.85</b>	UNICOM <b>123.05 (CTAF) 0</b>
--------------------------	---------------------------------------	---------------------------	----------------------------------



ELEV 2120	TDZE 2120
-----------	-----------

<div><div>5900</div><div>HAWTO</div></div> <div><div>*LNAV only.</div><div><div><div><div><div>5501 X 100</div><div>2239±</div><div>305° to RW31</div></div><div><div>REIL Rwy 13 and 31</div><div>MIRL Rwy 13-31</div></div></div><div><div><div>1.8 NM</div><div>4.6 NM</div><div>2.5 NM</div><div>4.4 NM</div></div><div><div>305°</div><div>125°</div><div>305°</div></div></div></div></div></div>		<div><div>5 NM Holding Pattern</div><div>ZASNO</div><div>OSMSS</div><div>CABID</div><div>RW31</div><div>4200</div><div>4900</div><div>6000</div><div>5400</div><div>GP 3.00°</div><div>TCH 50</div></div>			
CATEGORY		A	B	C	D
LPV	DA	2412-7⁄8 292 (300-7⁄8)			NA
LNAV/VNAV	DA	2740-1¾ 620 (700-1¾)			NA
LNAV	MDA	2740-1 620 (700-1)		2740-1¾ 620 (700-1¾)	NA
CIRCLING		2760-1 640 (700-1)	2820-1 700 (700-1)	2980-2½ 860 (900-2½)	NA

NE-3, 03 DEC 2020 to 31 DEC 2020

NE-3, 03 DEC 2020 to 31 DEC 2020