

CLTCH TWO DEPARTURE (RNAV)

NOTE: Chart not to scale.

TOP ALTITUDE:
3000

P-56B

P-56A

DEPARTURE ROUTE DESCRIPTION

Climb on heading assigned by ATC, expect RADAR vectors to BUTRZ, then on track 239° to CLTCH, thence....

.....on assigned transition. Maintain altitude assigned by ATC, expect clearance to filed altitude within ten (10) minutes after departure.

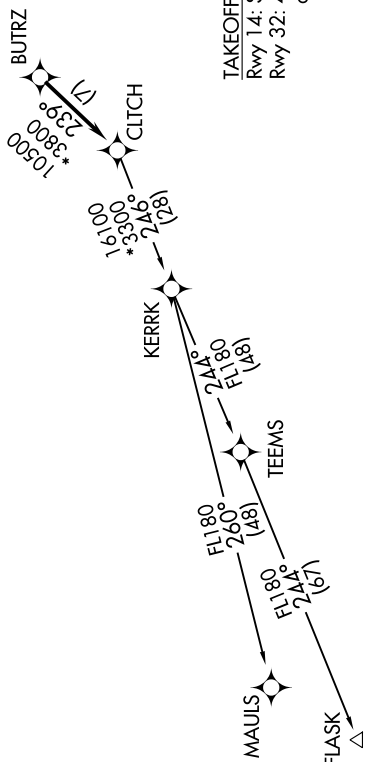
FLASK TRANSITION (CLTCH2.FLASK)
MAULS TRANSITION (CLTCH2.MAULS)

ATIS
128.175
CLNC DEL
351.8
GND CON
121.9 351.8
DAVISON TOWER ★
126.3 (CTAF) 229.4
POTOMAC DEP CON
118.95 257.2

NOTE: RNAV 1.

NOTE: RADAR required.

NOTE: DME/DME/IRU or GPS required.



NE-3, 03 DEC 2020 to 31 DEC 2020

CLTCH TWO DEPARTURE (RNAV)
(CLTCH2.CLTCH) 29MAR18

FORT BELVOIR, VIRGINIA
DAVISON AAF (DAA)