

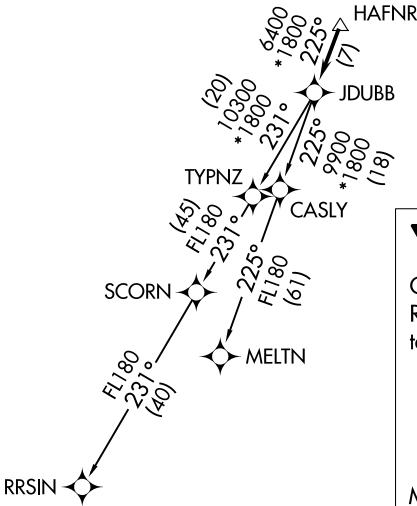
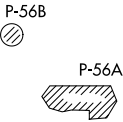
JDUBB THREE DEPARTURE (RNAV)

ATIS
128.175
CLNC DEL
351.8
GND CON
121.9 351.8
DAVISON TOWER ★
126.3 (CTAF) 229.4
POTOMAC DEP CON
118.95 257.2

TOP ALTITUDE:
3000

TAKEOFF MINIMUMS:

Rwy 14: Standard
Rwy 32: 400-2 or standard with minimum
climb of 300' per NM to 500.



NOTE: RNAV 1.
NOTE: RADAR required.
NOTE: DME/DME/IRU or GPS required.

DEPARTURE ROUTE DESCRIPTION

Climb on heading assigned by ATC, expect
RADAR vectors to HAFNR, then on track 225°
to JDUBB, thence....

....on assigned transition, maintain 3000,
expect clearance to filed altitude within
ten (10) minutes after departure.

MELTN TRANSITION (JDUBB3.MELTN)
RRSIN TRANSITION (JDUBB3.RRSIN)

NOTE: Chart not to scale.