

WAAS CH 45540 W34A	APP CRS 334°	Rwy Idg 4477 TDZE 20 Apt Elev 20
--	------------------------	---

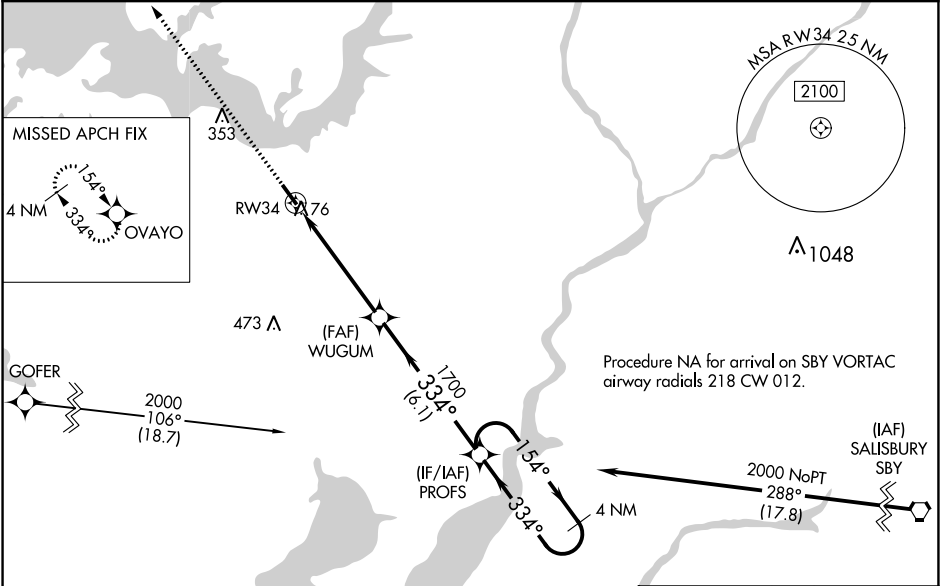
RNAV (GPS) RWY 34

CAMBRIDGE-DORCHESTER RGNL (CDE)

Circling NA at night. For uncompensated Baro-VNAV systems, LNAV/VNAV NA below -15°C (5°F) or above 54°C (130°F).
Rwy 34 helicopter visibility reduction below ¾ SM NA.
DME/DME RNP-0.3 NA.

MISSED APPROACH: Climb to 2000 direct OVAYO and hold.

AWOS-3 120.675	PATUXENT APP CON ★ 121.0 250.3	UNICOM 122.7 (CTAF)	121.9
--------------------------	--	-------------------------------	--------------



2000

OVAYO

VGSI and RNAV glidepath not coincident (VGSI Angle 3.25/TCH 35).

* LNAV only.

WUGUM 1700

PROFS 1700

4 NM Holding Pattern

1.2 NM to RW34

3.9 NM

6.1 NM

GP 3.00° TCH 57

CATEGORY	A	B	C	D
LPV DA		286-7/8	266 (300-7/8)	
LNAV/VNAV DA		309-7/8	289 (300-7/8)	
LNAV MDA	480-1	460 (500-1)	480-1 3/8	460 (500-1 3/8)
CIRCLING	480-1	460 (500-1)	660-1 3/4 640 (700-1 3/4)	780-2 1/2 760 (800-2 1/2)

MIRL Rwy 16-34

REIL Rwy 16 and 34