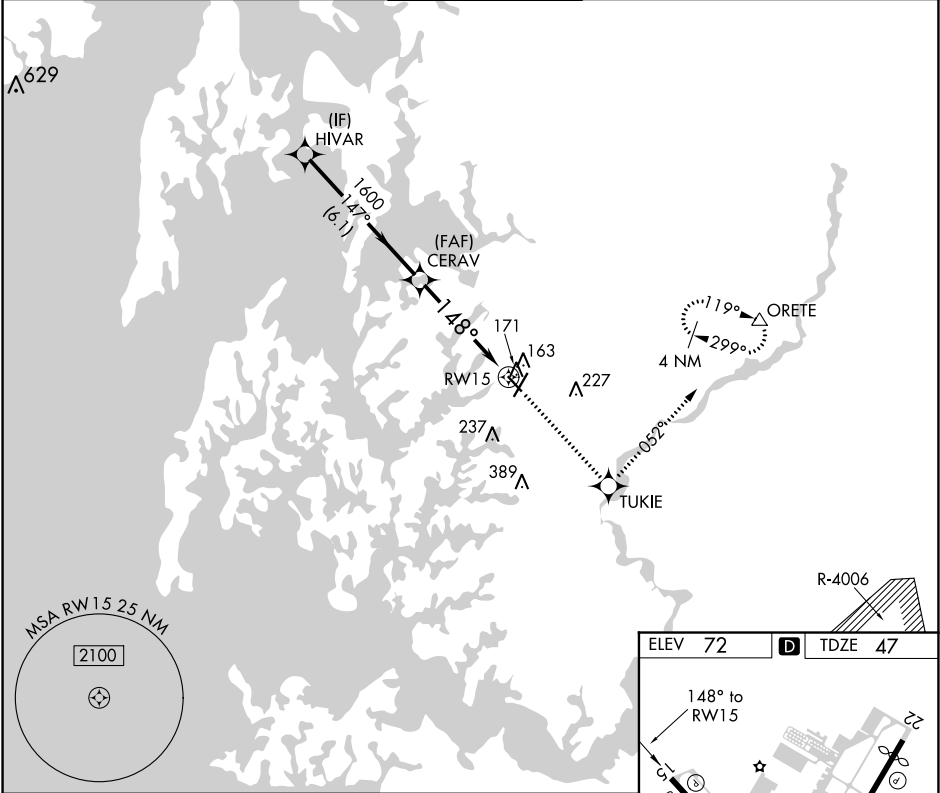


APP CRS	Rwy Idg	4003
148°	TDZE	47
	Apt Elev	72

RNAV (GPS) RWY 15

EASTON/NEWNAM FIELD (ESN)

RNP APCH.			MISSED APPROACH: Climb to 2000 direct TUKIE and on track 052° to ORETE and hold.	
Rwy 15 helicopter visibility reduction below 1 SM NA. Straight-in Rwy 15 NA at night, Circling Rwy 15, 33 NA at night.				
ATIS 124.475	POTOMAC APP CON 133.75 254.35	EASTON TOWER ★ 118.525 (CTAF) 0	GND CON 119.075	CLNC DEL 119.075



Visual Segment - Obstacles.				2000	TUKIE	tr 052°	ORETE
CATEGORY	A	B	C	D			
LNAV MDA	440-1	393 (400-1)	440-1 1/8 393 (400-1 1/8)	440-1 1/4 393 (400-1 1/4)			
CIRCLING	480-1 408 (500-1)	640-1 568 (600-1)	640-1 1/2 568 (600-1 1/2)	740-2 668 (700-2)			

ELEV 72 TDZE 47

HIRL Rwy 4-22 0  
REIL Rwys 15, 22 and 33 0  
MIRL Rwys 15-33 0

NE-3, 03 DEC 2020 to 31 DEC 2020

NE-3, 03 DEC 2020 to 31 DEC 2020