

WAAS CH 86905 W04A	APP CRS 040°	Rwy Idg 4775 TDZE 58 Apt Elev 72
--	------------------------	---

RNAV (GPS) RWY 4

EASTON/NEWMAM FIELD (ESN)

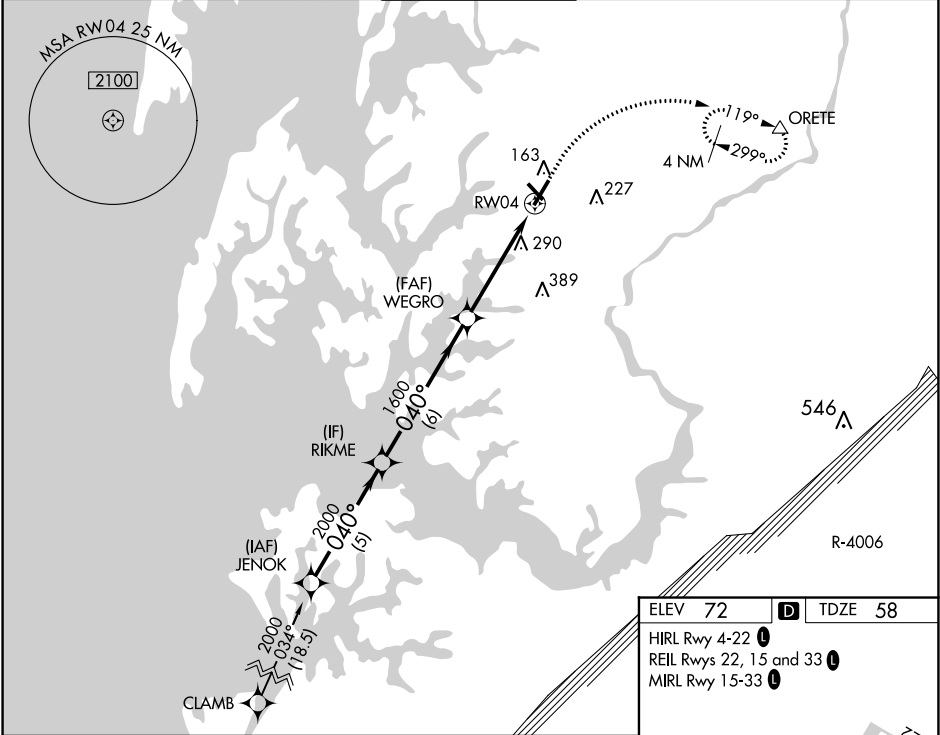
⚠

⚠

DME/DME RNP-0.3 NA. When local altimeter setting not received, use Cambridge altimeter setting; increase LPV DA to 303 feet, LNAV/VNAV DA to 391 feet and all MDA 60 feet; increase LPV and LNAV/VNAV all Cats visibility and LNAV Cat C/D visibility ½ SM and increase Circling Cat C/D visibility ¼ SM. VDP and Baro-VNAV NA when using Cambridge altimeter setting. Circling Rwy 15, 33 NA at night. For uncompensated Baro-VNAV systems, LNAV/VNAV NA below -15°C (5°F) or above 54°C (130°F).

MISSED APPROACH:
Climb to 700 then climbing right turn to 2000 direct ORETE and hold.

ATIS 124.475	POTOMAC APP CON 133.75 254.35	EASTON TOWER ★ 118.525 (CTAF) 0	GND CON 119.075	CLNC DEL 119.075
------------------------	---	---	---------------------------	----------------------------



JENOK

RIKME

WEGRO

ORETE

2000

2000

1600

700

2000

ORETE

GP 3.00°

TCH 44

5 NM

6 NM

3.1 NM

1.6

*1.6 NM to RW04

*LNAV only

CATEGORY	A	B	C	D
LPV DA		258-¾	200 (200-¾)	
LNAV/VNAV DA		346-1	288 (300-1)	
LNAV MDA	600-1	542 (600-1)	600-1½	542 (600-1½)
Ⓢ CIRCLING	600-1 528 (600-1)	640-1 568 (600-1)	640-1½ 568 (600-1½)	740-2 668 (700-2)

ELEV 72

D

TDZE 58

HIRL Rwy 4-22

REIL Rwy 22, 15 and 33

MIRL Rwy 15-33

TWR

5500 X 100

4003 X 100

0.5% UP

0.7% UP

0.40° to RW04

NE-3, 03 DEC 2020 to 31 DEC 2020

NE-3, 03 DEC 2020 to 31 DEC 2020