

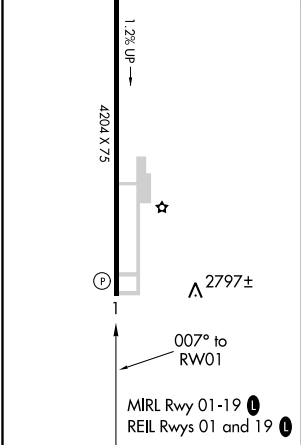
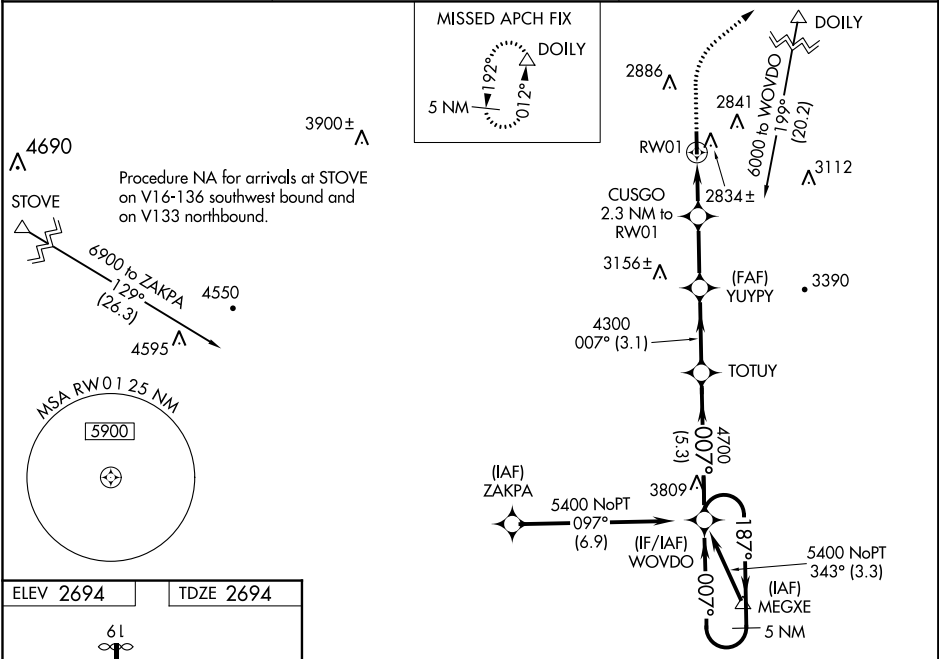
WAAS CH <b>69527</b> <b>W01A</b>	APP CRS <b>007°</b>	Rwy Idg TDZE Apt Elev	<b>4204</b> <b>2694</b> <b>2694</b>
--	------------------------	-----------------------------	---

**RNAV (GPS) RWY 1**  
TWIN COUNTY (HLX)

**Baro-VNAV NA** when using Dublin altimeter setting. For uncompensated Baro-VNAV systems, LNAV/VNAV NA below -20°C (-4°F) or above 54°C (130°F). DME/DME RNP-0.3 NA. Visibility reduction by helicopters NA. VDP NA with Dublin altimeter setting. When local altimeter setting not received, use Dublin altimeter setting and increase all DA 137 feet and all MDA 140 feet, increase LPV all Cats visibility, LNAV/VNAV all Cats visibility and LNAV Cats C/D visibility ½ mile, and increase Circling Cats C/D visibility ¼ mile.

**MISSED APPROACH:** Climb to 3200 then climbing right turn to 5100 direct DOILY and hold, continue climb-in-hold to 5100.

AWOS-3 <b>118.375</b>	ROANOKE APP CON <b>126.0 339.8</b>	UNICOM <b>122.8 (CTAF) 0</b>
--------------------------	---------------------------------------	---------------------------------



3200	5100	DOILY	VGSI and RNAV glidepath not coincident (VGSI Angle 3.00/TCH 21).	5 NM Holding Pattern
<b>*LNAV only.</b>				
CUSGO 2.3 NM to RW01				
YUYPY 4300				
TOTUY 4700				
WOYDO 5400				
GP 3.00° TCH 55				
1.2 NM 1.1 NM 2.6 NM 3.1 NM 5.3 NM				
CATEGORY	A	B	C	D
LPV DA	2965-1		271 (300-1)	
LNAV/VNAV DA	3016-1		322 (400-1)	
LNAV MDA	3100-1 406 (500-1)		3100-1½ 406 (500-1½)	
CIRCLING	3200-1 506 (600-1)		3200-1½ 506 (600-1½) 3260-2 566 (600-2)	

NE-3, 03 DEC 2020 to 31 DEC 2020

NE-3, 03 DEC 2020 to 31 DEC 2020