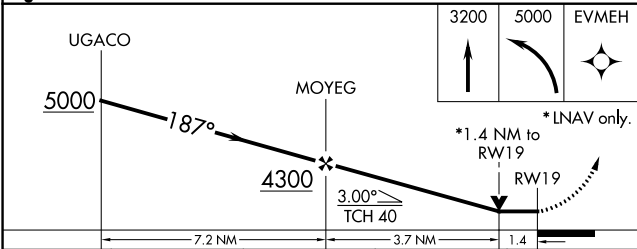
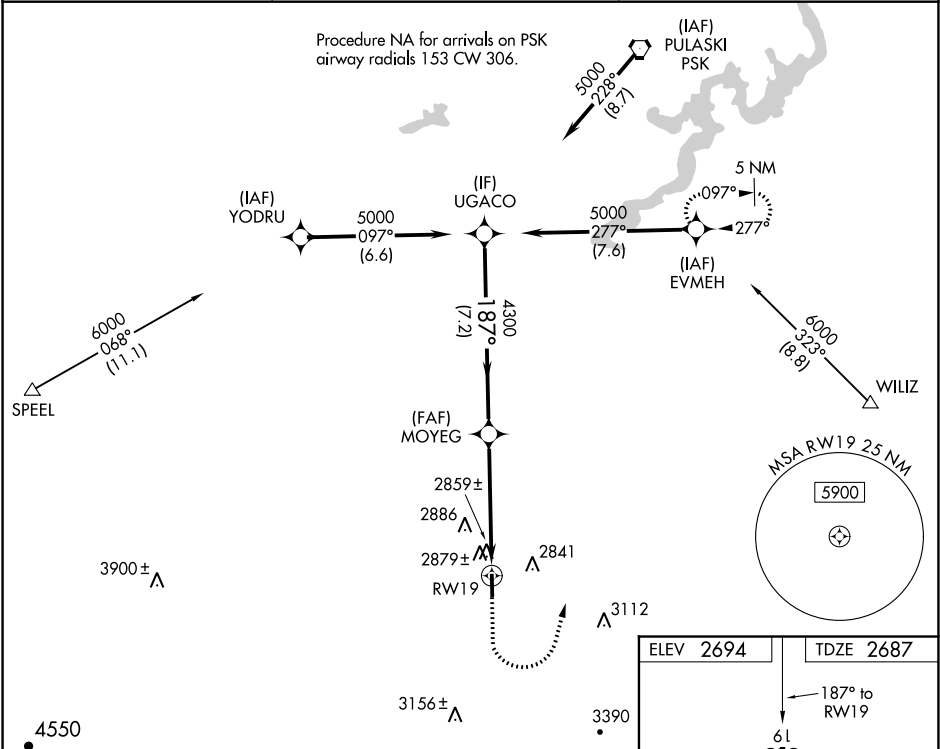


WAAS CH <b>58027</b> <b>W19A</b>	APP CRS <b>187°</b>	Rwy Idg TDZE Apt Elev	<b>4154</b> <b>2687</b> <b>2694</b>
--	------------------------	-----------------------------	---

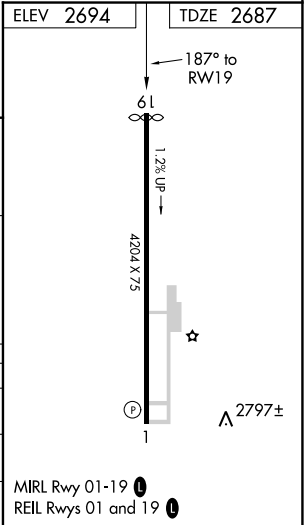
RNAV (GPS) RWY 19  
TWIN COUNTY (HLX)

<p><b>⚠</b> DME/DME RNP-0.3 NA. Visibility reduction by helicopters NA. VDP NA with Dublin altimeter setting. When local altimeter setting not received, use Dublin altimeter setting and increase all MDA 140 feet, increase LP Cats C/D visibility and LNAV Cats C/D visibility 3/8 mile, increase Circling Cats C/D visibility 1/4 mile.</p>	<p><b>MISSED APPROACH:</b> Climb to 3200 then climbing left turn to 5000 direct EVMEH and hold.</p>
---	---

AWOS-3 <b>118.375</b>	ROANOKE APP CON <b>126.0 339.8</b>	UNICOM <b>122.8 (CTAF) 0</b>
--------------------------	---------------------------------------	---------------------------------



CATEGORY	A	B	C	D
LP MDA	3120-1	433 (500-1)	3120-1 3/8	433 (500-1 3/8)
LNAV MDA	3140-1	453 (500-1)	3140-1 3/8	453 (500-1 3/8)
CIRCLING	3200-1	506 (600-1)	3200-1 1/2 506 (600-1 1/2)	3260-2 566 (600-2)



NE-3, 03 DEC 2020 to 31 DEC 2020

NE-3, 03 DEC 2020 to 31 DEC 2020