

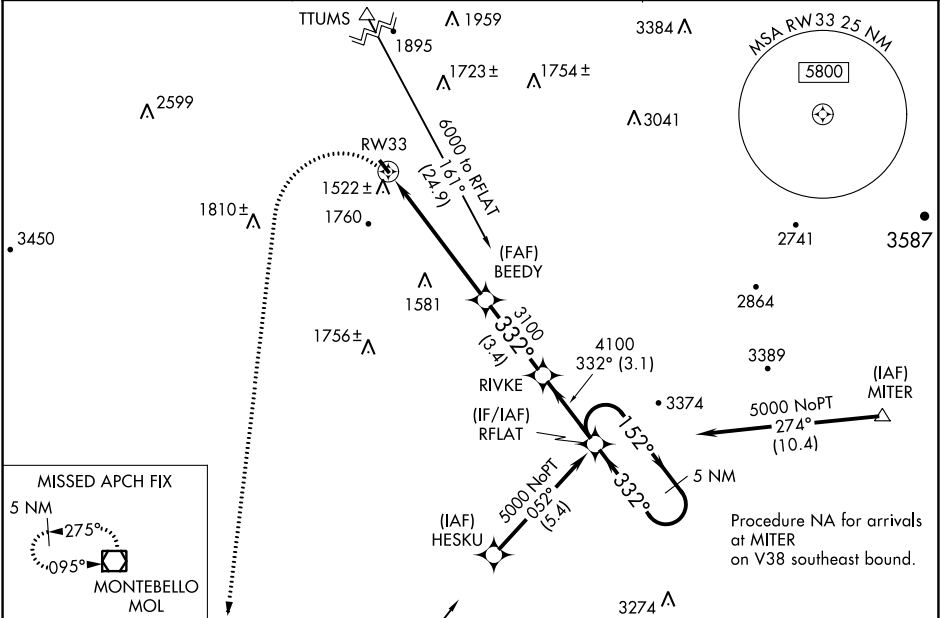
APP CRS	Rwy Idg	2377
332°	TDZE	1165
	Apt Elev	1165

RNAV (GPS) RWY 33

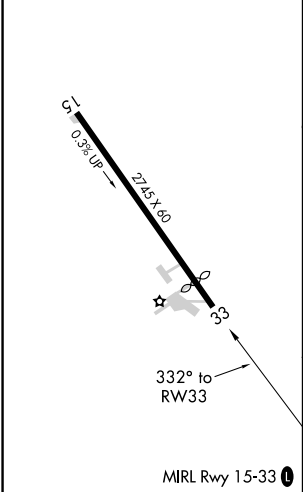
BRIDGEWATER AIR PARK (VBW)

<p>NA</p> <p>-20°C</p>	<p>DME/DME RNP-0.3 NA. Helicopter visibility reduction below ¾ SM NA. When local altimeter setting not received, use Staunton/Waynesboro/Harrisonburg altimeter setting and increase all MDA 40 feet.</p>	<p>MISSED APPROACH: Climbing left turn to 6000 direct left turn to 6000 direct MOL VOR/DME and hold.</p>
--------------------------------------	---	--

AWOS-3 119.55	POTOMAC APP CON 132.85 323.125	UNICOM 122.7 (CTAF) 1
------------------	-----------------------------------	---------------------------------



ELEV 1165	TDZE 1165
-----------	-----------



6000	MOL	5 NM Holding Pattern			
RW33		BEEDY	RIVKE	332°	5000
3.05° TCH 40		3100	4100	152°	332°
5.9 NM		3.4 NM	3.1 NM		
CATEGORY	A	B	C	D	
LNAV MDA	1780-1	615 (700-1)	NA		
CIRCLING	1860-1 695 (700-1)	2020-1¼ 855 (900-1¼)	NA		

NE-3, 03 DEC 2020 to 31 DEC 2020

NE-3, 03 DEC 2020 to 31 DEC 2020