

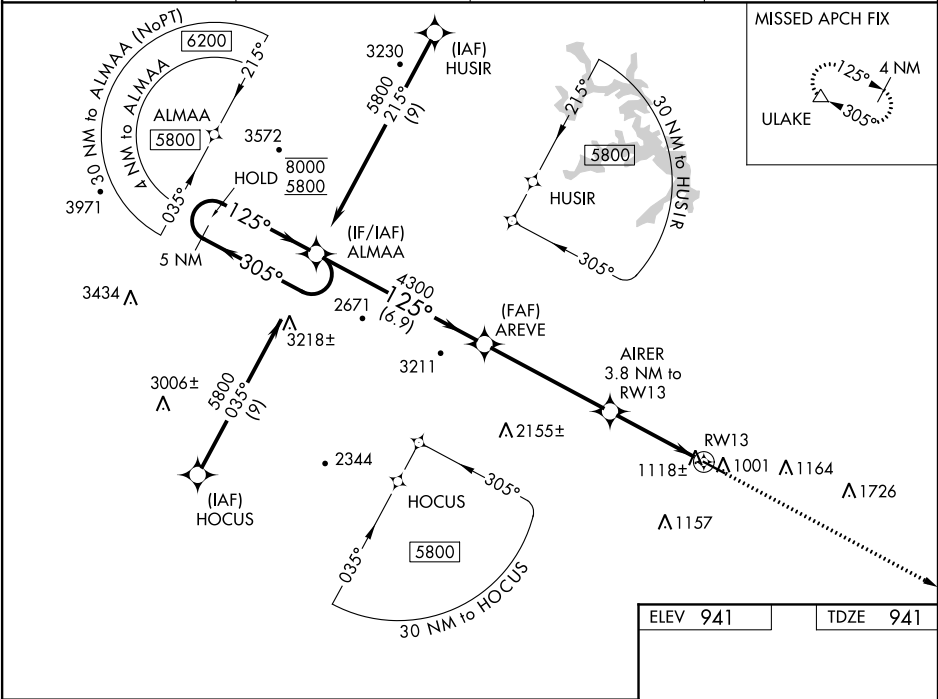
WAAS CH 50218 W13A	APP CRS 125°	Rwy Idg TDZE Apt Elev	5002 941 941
--	------------------------	-----------------------------	---

RNAV (GPS) RWY 13

BLUE RIDGE (MTV)

RNP APCH.	MISSED APPROACH: Climb to 3000 direct ULAKE and hold.
<div><div><div></div><div>Rwy 13 helicopter visibility reduction below ¾ SM NA. For uncompensated Baro-VNAV systems, LNAV/VNAV NA below -16°C or above 46°C.</div></div></div>	

AWOS-3 118.45	GREENSBORO APP CON 124.35 269.225	CLNC DEL 124.85	UNICOM 122.7 (CTAF) 0
-------------------------	---	---------------------------	---------------------------------



5 NM Holding Pattern ALMAA				VGSi and RNAV glidepath not coincident (VGSi Angle 3.00/TCH 40).		3000	ULAKE
8000 ← 305° 5800 ← 125°				GP 3.50° TCH 40		*LNNAV only.	
AREVE 4300				AIRER 3.8 NM to RWY13		*2400	
6.9 NM				5.1 NM		2.5 NM	
1.3 NM				RWY13		5002 X 100	
CATEGORY				A		B	
LPV DA				1301-1		360 (400-1)	
LNAV/VNAV DA				1324-1½		383 (400-1½)	
LNAV MDA				1380-1 439 (500-1)		1380-1¼ 439 (500-1¼)	
CIRCLING				1420-1 479 (500-1)		1440-1 499 (500-1)	
				1540-1½ 599 (600-1½)		1800-2¾ 859 (900-2¾)	
				MIRL Rwy 13-31 0		REIL Rwys 13 and 31 0	