

VORTAC HPW	APP CRS	Rwy Idg	5002
112.0	252°	TDZE	191
Chan 57		Apt Elev	193

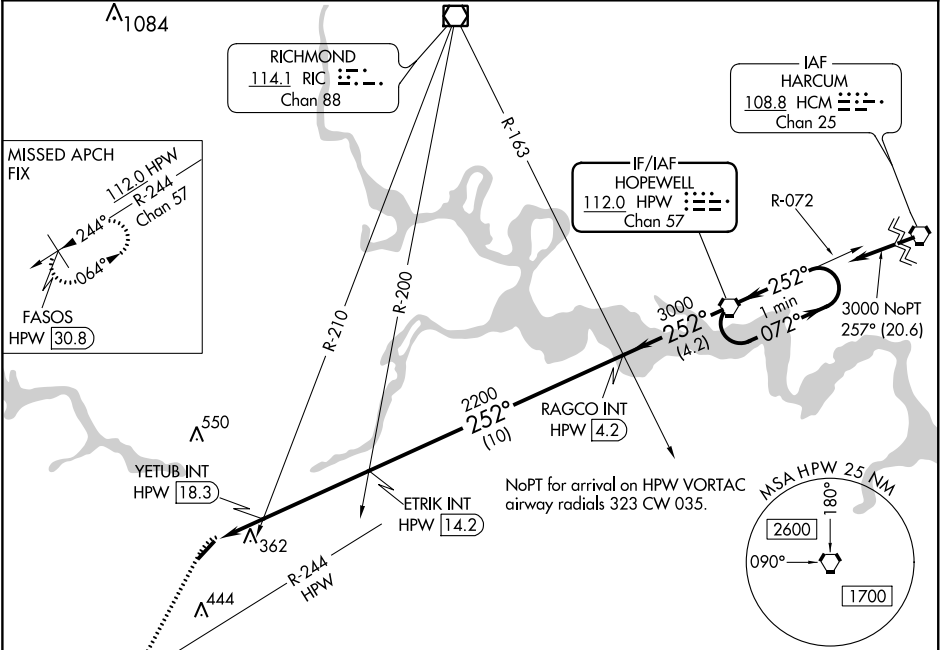
VOR RWY 23

DINWIDDIE COUNTY (PTB)

When local altimeter setting not received, use Richmond Executive-Chesterfield County altimeter setting and increase all MDA 40 feet; increase S-23 Cat C and Circling Cat C visibility 1/8 mile and YETUB fix minimums S-23 Cat C visibility 1/8 mile and Circling Cat C visibility 1/4 mile. DME required.

MISSED APPROACH: Climb to 2000 on heading 214° and HPW R-244 to FASOS/HPW 30.8 DME and hold.

AWOS-3	POTOMAC APP CON	GCO	UNICOM
133.325	126.75 307.2	135.075	122.7 (CTAF) 0



2000		ELEV 193		TDZE 191	
↑ hdg 214°		HPW R-244		FASOS HPW 30.8	
		*780 when using Richmond Executive-Chesterfield County altimeter setting.		One Minute Holding Pattern	
YETUB INT HPW 18.3		ETRIK INT HPW 14.2		RAGCO INT HPW 4.2	
HPW 20.2		3.06° TCH 40		252° 3000	
1.9 NM		4.2 NM		10 NM	
4.2 NM		4.2 NM		4.2 NM	
CATEGORY	A	B	C	D	
S-23	740-1	549 (600-1)	740-1 5/8 549 (600-1 5/8)	NA	
CIRCLING	740-1	547 (600-1)	760-1 5/8 567 (600-1 5/8)	NA	
YETUB FIX MINIMUMS (DUAL VOR RECEIVERS OR DME REQUIRED)					
S-23	620-1	429 (500-1)	620-1 1/4 429 (500-1 1/4)	NA	
CIRCLING	680-1	487 (500-1)	760-1 1/2 567 (600-1 1/2)	NA	
MIRL Rwy 5-23 0		REIL Rwy 5 and 23 0		FAF to MAP 6.1 NM	
Knots		60		90	
Min:Sec		6:06		4:04	
		3:03		2:26	
		2:02			