

LOC/DME I-VJI	APP CRS	Rwy Idg	4471
108.3	241°	TDZE	2087
Chan 20		Apt Elev	2087

LOC RWY 24

VIRGINIA HIGHLANDS (VJI)

▼

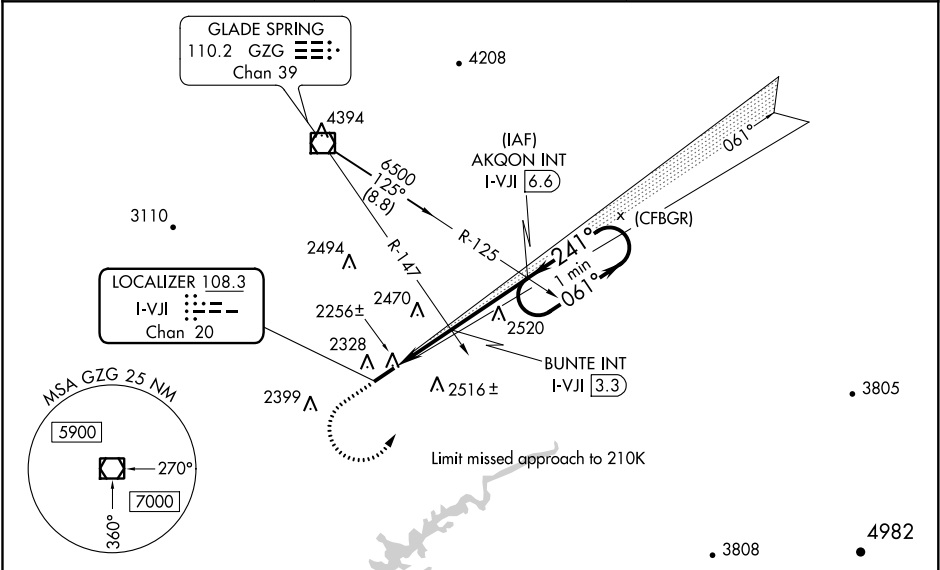
▲

Inop table does not apply. GPS required. Cat D Straight-in minima NA when using Tri-Cities altimeter setting. When local altimeter setting not received; use Tri-Cities altimeter setting and increase all MDA 140 feet; and increase S-24 Cat A and B and Circling Cat B visibility ¼ mile, and S-24 Cat C and Circling Cat C visibility ½ mile. Increase BUNTE fix minimums S-24 Cat C visibility ¾ mile, Circling Cats A and B visibility ¼ mile, and Circling Cat C visibility ½ mile. Helicopter visibility reduction below 1 SM NA.

ODALS

MISSED APPROACH: Climb to 3200 then climbing left turn to 4300 direct AKQON INT and hold.

AWOS-3	TRI-CITY APP CON ★	UNICOM
128.125	125.25 349.0	122.8(CTAF) 0



ELEV 2087

TDZE 2087

241° 5.8 NM from FAF

0.6% UP

4471 X 75

MIRL Rwy 6-24 0

REIL Rwy 24 0

FAF to MAP 5.8 NM

3200	4300	AKQON INT	AKQON INT I-VJI 6.6	One Minute Holding Pattern
VGSi and descent angles not coincident. (VGSi Angle 4.00/TCH 32).		BUNTE INT I-VJI 3.3	2940*	4000
I-VJI 0.8			≤3.02° TCH 45	*3080 when using Tri-Cities altimeter setting.
2.5 NM		3.3 NM		

CATEGORY	A	B	C	D
S-24	2940-1 853 (900-1)	2940-1¼ 853 (900-1¼)	2940-2½ 853 (900-2½)	853 (900-2½)
CIRCLING	2940-1¼ 853 (900-1¼)	2940-2½ 853 (900-2½)	3080-3 993 (1000-3)	
BUNTE FIX MINIMUMS				
S-24	2520-1 433 (500-1)	2520-1¼ 433 (500-1¼)		
CIRCLING	2860-1 773 (800-1)		2900-2½ 813 (900-2½)	3080-3 993 (1000-3)