

WAAS CH 82411 W06A	APP CRS 061°	Rwy Idg TDZE 2068 Apt Elev 2087
--	------------------------	---

RNAV (GPS) RWY 6

VIRGINIA HIGHLANDS (VJI)

RNP APCH.

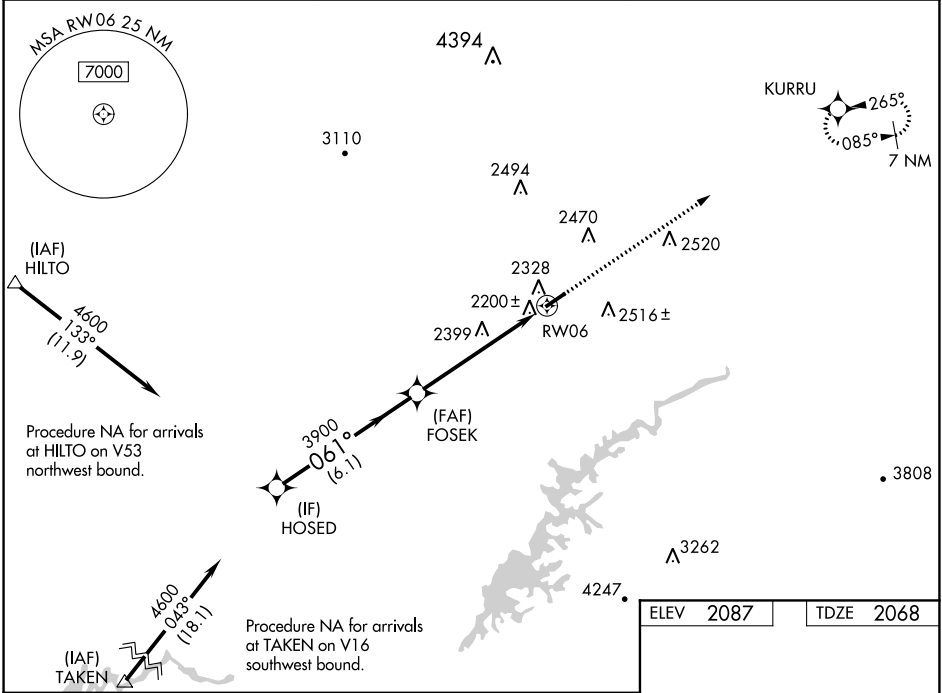
▼

▲

Rwy 6 helicopter visibility reduction below 1 SM NA. For uncompensated Baro-VNAV systems, LNAV/VNAV NA below -19°C or above 54°C.

MISSED APPROACH:
Climb to 7300 direct KURRU and hold, continue climb-in-hold to 7300.

AWOS-3 128.125	TRI-CITY APP CON ★ 125.25 349.0	UNICOM 122.8 (CTAF) 0
--------------------------	---	---------------------------------



HOSED
4600

GP 3.00°
TCH 45

FOSEK
3900

RW06

7300 KURRU

6.1 NM

5.6 NM

CATEGORY	A	B	C	D
LPV DA	2443-1¼ 375 (400-1¼)			
LNAV/VNAV DA	2489-1¼ 421 (500-1¼)			
LNAV MDA	2660-1	592 (600-1)	2660-1¾	592 (600-1¾)
CIRCLING	2860-1	773 (800-1)	2860-2¼ 773 (800-2¼)	3080-3 993 (1000-3)

0.6% UP

4471 X 75

061° to RW06

MIRL Rwy 6-24 0

REIL Rwy 24 0