

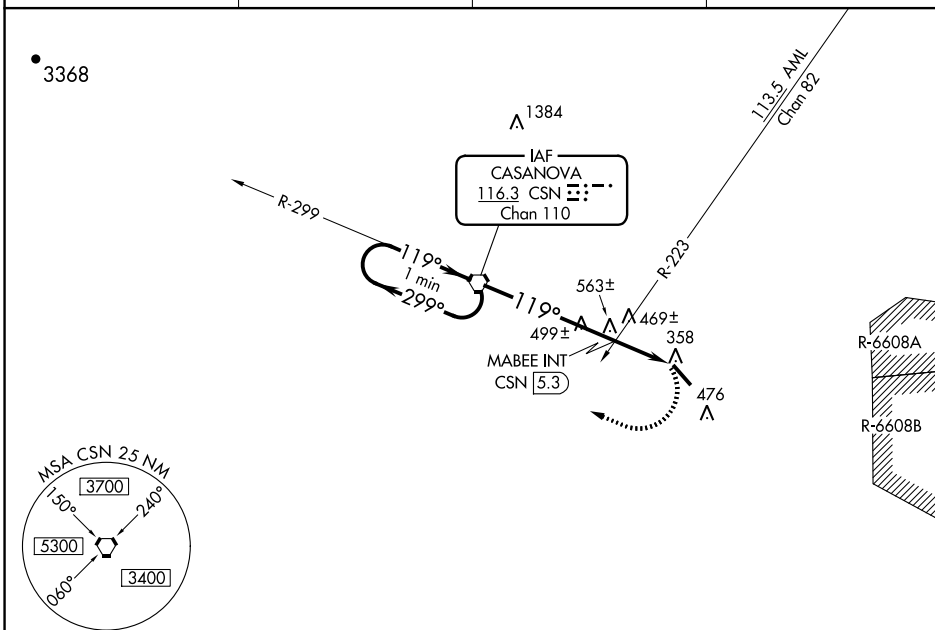
VORTAC CSN <b>116.3</b> Chan <b>110</b>	APP CRS <b>119°</b>	Rwy Idg <b>5000</b> TDZE <b>327</b> Apt Elev <b>336</b>
---	------------------------	---

VOR RWY 15  
WARRENTON-FAUQUIER (HWY)

**T** When local altimeter setting not received, use Culpeper altimeter setting and increase all MDA 40 feet; increase S-15 Cats C/D and Circling Cats C/D visibility  $\frac{1}{2}$  mile; increase MABEE fix minimums S-15 Cats C/D and Circling Cat C visibility  $\frac{1}{4}$  mile. Helicopter visibility reduction below  $\frac{3}{4}$  SM NA.

**MISSED APPROACH:** Climbing right turn to 2800 direct to CSN VORTAC and hold.

AWOS-3 <b>120.350</b>	CJR AWOS-3 <b>119.325</b>	POTOMAC APP CON <b>128.525 306.925</b>	UNICOM <b>122.7 (CTAF) 0</b>
--------------------------	------------------------------	---	---------------------------------



NE-3, 03 DEC 2020 to 31 DEC 2020

