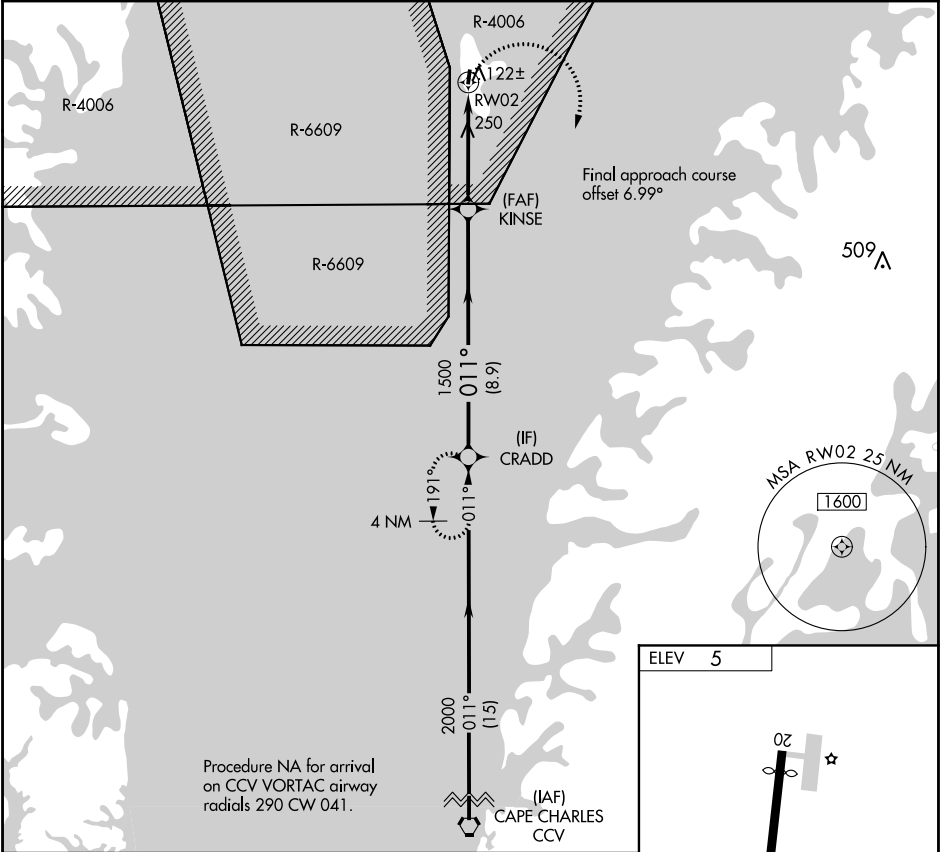


APP CRS <b>011°</b>	Rwy Idg TDZE Apt Elev	<b>N/A</b> <b>N/A</b> <b>5</b>
------------------------	-----------------------------	--------------------------------------

**RNAV (GPS)-B**  
TANGIER ISLAND (TGI)

<p><b>▼</b> DME/DME RNP-0.3 NA. When local altimeter setting not received, use Patuxent River NAS altimeter setting and increase all MDAs 100 feet. Specific clearance from Patuxent App Con required before proceeding northbound from CRADD. Approach is within R-6609 and underlies R-4006. Procedure NA at night.</p>	<p><b>MISSED APPROACH:</b> Climbing right turn to 2000 direct CRADD and hold.</p>
---	---

AWOS-3 <b>119.8</b>	PATUXENT APP CON ★ <b>121.0 250.3</b>	UNICOM <b>122.8 (CTAF) 0</b>
------------------------	--	---------------------------------



CATEGORY	A	B	C	D
CIRCLING	560-1	555 (600-1)	NA	

NE-3, 03 DEC 2020 to 31 DEC 2020

NE-3, 03 DEC 2020 to 31 DEC 2020