

NDB	MSQ	APP CRS	Rwy Idg	5000
	351	037°	TDZE	316
			Apt Elev	316

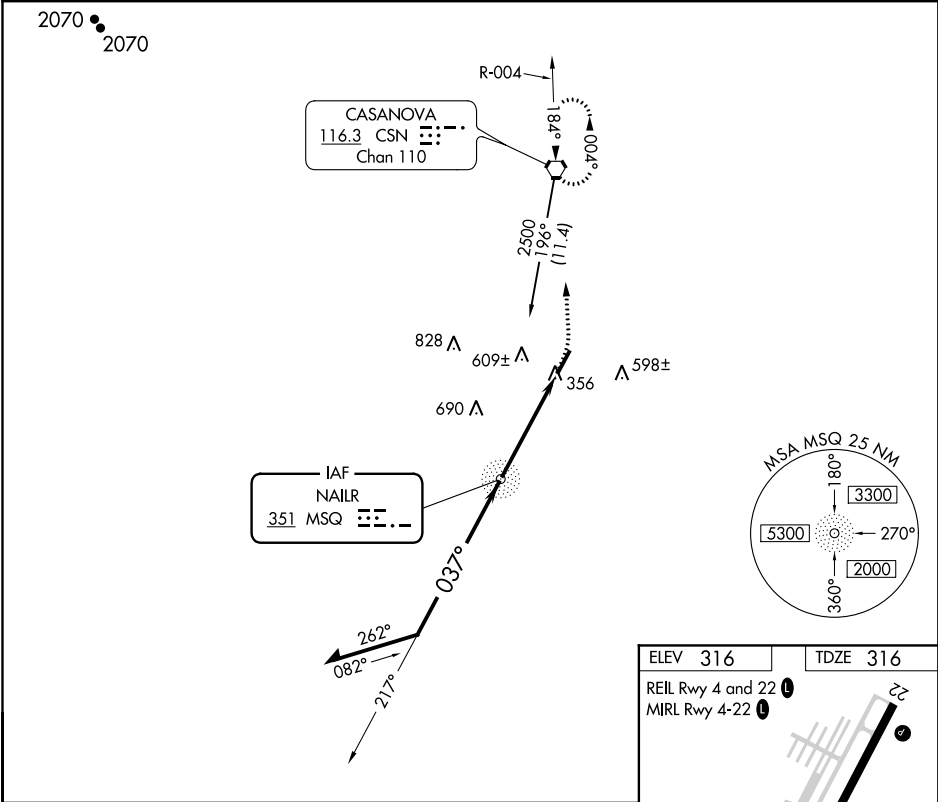
NDB RWY 4
CULPEPER RGNL (CJR)

▼

▲

MISSED APPROACH: Climbing left turn to 3000 direct CSN VORTAC and hold, continue climb-in-hold to 3000.

AWOS-3 119.325	POTOMAC APP CON 128.525 306.925	CLNC DEL 121.6	UNICOM 123.075 (CTAF) 0
-------------------	------------------------------------	-------------------	----------------------------



Remain within 10 NM

MSQ NDB

2500

217°

037°

2100

3.77°

TCH 40

4.4 NM

3000

CSN

VGSI and descent angles not coincident (VGSI Angle 3.00/TCH 40).

CATEGORY	A	B	C	D
S-4	920-1	604 (700-1)	920-1 ¾ 604 (700-1 ¾)	NA
CIRCLING	920-1	604 (700-1)	920-1 ¾ 604 (700-1 ¾)	NA

