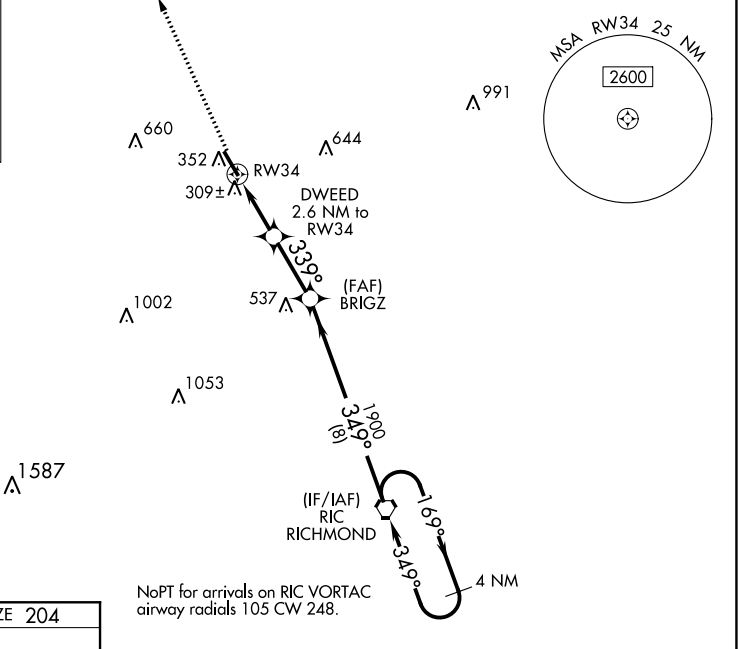
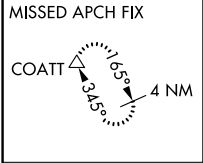


WAAS CH 72937 W34A	APP CRS 339°	Rwy Idg TDZE 204 Apt Elev 207	RNAV (GPS) RWY 34 HANOVER COUNTY MUNI (OFP)
--	------------------------	---	---

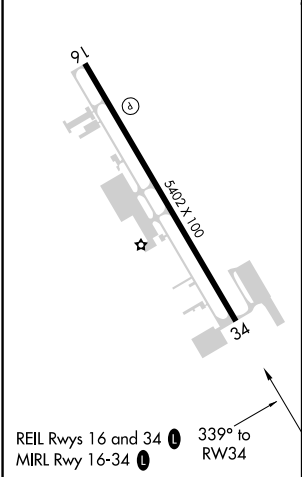
⚠ For uncompensated Baro-VNAV systems, LNAV/VNAV NA below -11°C (13°F) or above 54°C (130°F). DME/DME RNP-0.3 NA. When local altimeter setting not received, use Richmond Intl altimeter setting and increase all DA 37 feet and all MDA 40 feet; increase LNAV/VNAV all Cats and LNAV Cats C/D visibility ½ mile. Baro-VNAV and VDP NA when using Richmond Intl altimeter setting.

MISSED APPROACH: Climb to 700 then climb to 2000 direct COATT and hold.

ASOS 119.025	POTOMAC APP CON 126.75 307.2	CLNC DEL 125.4	UNICOM 122.7 (CTAF) 0
------------------------	--	--------------------------	---------------------------------



ELEV 207	TDZE 204
-----------------	-----------------



700		2000	COATT	4 NM Holding Pattern	
↑		↑	△		
*LNAV only.					
CATEGORY		A		B	C
LPV DA		454-1		250 (300-1)	
LNAV/VNAV DA		493-1		289 (300-1)	
LNAV MDA		560-1		356 (400-1)	
CIRCLING		660-1 453 (500-1)		900-2 693 (700-2)	1020-2¾ 813 (900-2¾)