

APP CRS
184°

Rwly Idg
3400

TDZE
503

Apt Elev
503

RNAV (GPS) RWY 18

CHASE CITY MUNI (CXE)

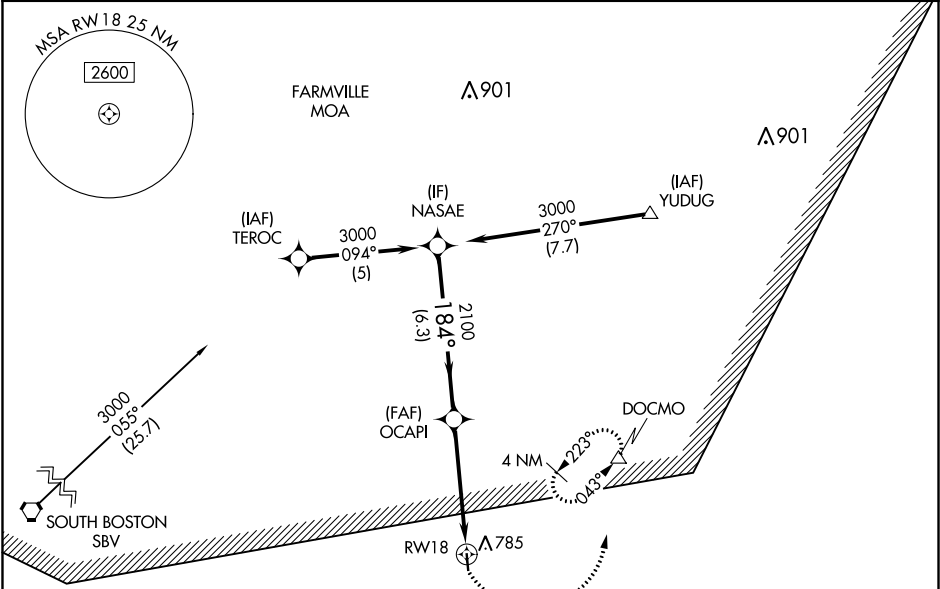
RNP APCH.

NA

Use South Hill altimeter setting, when not received use Danville altimeter setting and increase all MDA 60 feet. Procedure NA at night. Rwy 18 helicopter visibility reduction below 1 SM NA.

MISSED APPROACH: Climbing left turn to 3000 direct DOCMO and hold, continue climb-in-hold to 3000.

AWOS-3 121.225	WASHINGTON CENTER 118.75 353.9	UNICOM 122.9 (CTAF)
--------------------------	--	-------------------------------



Procedure NA for arrivals at SBV VORTAC on airway radials 032 CW 086.



VGSI and descent angles not coincident.

3000

2100

3000

DOCMO

NASAE

OCAPI

RW18

184°

3.00°

TCH 45

6.3 NM

4.9 NM

CATEGORY	A	B	C	NA	D
LNAV MDA	1520-3	1017 (1100-3)	NA		