

LOC/DME I-EYK 111.7 Chan 54	APP CRS 048°	Rwy Idg 5500 TDZE 18 Apt Elev 19
---	------------------------	---

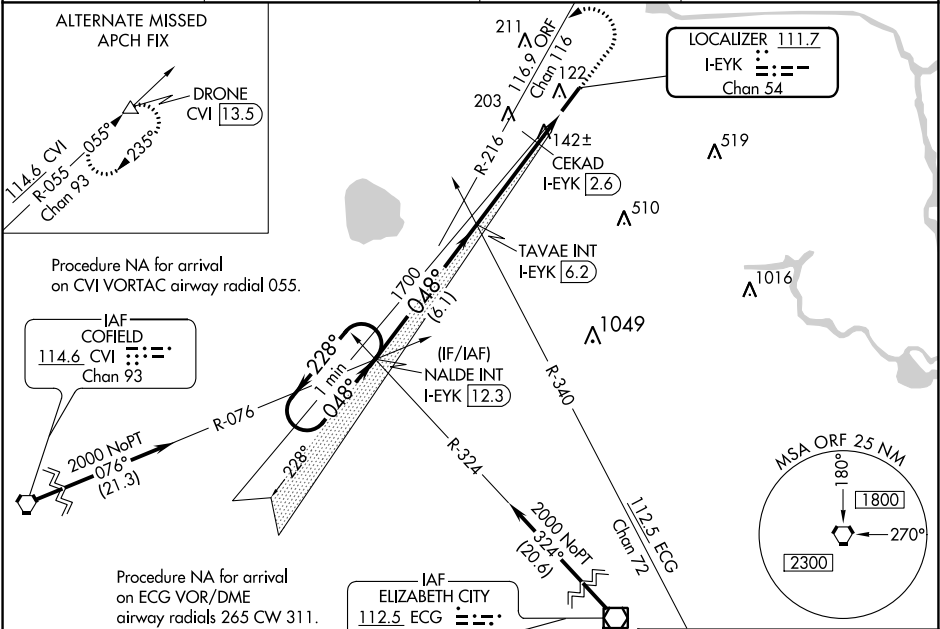
ILS or LOC RWY 5
CHESAPEAKE RGNL (CPK)

⚠ When local altimeter setting not received, use Norfolk Intl altimeter setting and increase all DA 36 feet and all MDA 40 feet; increase CEKAD Fix Minimums S-LOC 5 Cats C and D visibility ½ mile. For inoperative MALSR, increase S-LOC 5 Cats C and D visibility to 1 ½ mile.

MALSR
AS

MISSED APPROACH: Climb to 500 then climbing left turn to 2000 on ORF VORTAC R-216 to NALDE INT/I-EYK 12.3 DME and hold.

AWOS-3 123.675	NORFOLK APP CON 118.9 353.7	GCO 135.075	UNICOM 123.075 (CTAF) 0
--------------------------	---------------------------------------	-----------------------	-----------------------------------



ELEV 19	TDZE 18
----------------	----------------

VGSI and ILS glidepath not coincident (VGSI Angle 3.00/TCH 43).

One Minute Holding Pattern

NALDE INT I-EYK 12.3

TAVAE INT I-EYK 6.2

CEKAD I-EYK 2.6

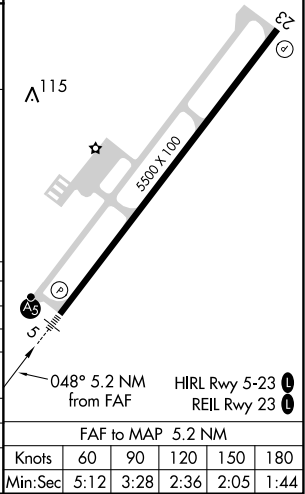
I-EYK 1.1

GS 3.00° TCH 43

2000 ← 228° 048° → 1700

6.1 NM → 3.7 NM → 1.5 NM

CATEGORY	A	B	C	D
S-ILS 5	218-½ 200 (200-½)			
S-LOC 5	480-½	462 (500-½)	480-1	462 (500-1)
CIRCLING	480-1	461 (500-1)	480-1½ 461 (500-1½)	580-2 561 (600-2)
CEKAD FIX MINIMUMS				
S-LOC 5	400-½	382 (400-½)	400-½	382 (400-½)
CIRCLING	460-1 441 (500-1)	480-1 461 (500-1)	480-1½ 461 (500-1½)	580-2 561 (600-2)



NE-3, 03 DEC 2020 to 31 DEC 2020

NE-3, 03 DEC 2020 to 31 DEC 2020