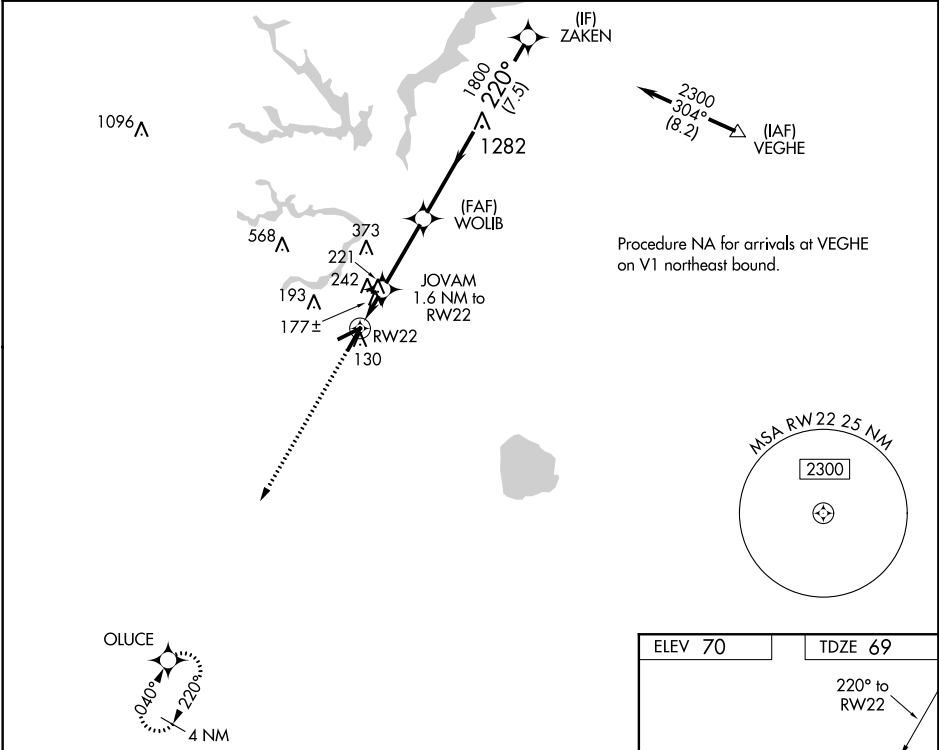


WAAS CH 99325 W22A	APP CRS 220°	Rwy Idg 5007 TDZE 69 Apt Elev 70
--	------------------------	---

RNAV (GPS) RWY 22
SUFFOLK EXECUTIVE (SFQ)

<p>⚠ DME/DME RNP-0.3 NA. Helicopter visibility reduction below ¾ SM NA. VDP NA with Norfolk Intl altimeter setting. When local altimeter setting not received, use Norfolk Intl altimeter setting and increase all MDA 60 feet, and increase LP Cats C and D visibility ¼ mile and LNAV Cats C and D visibility ½ mile.</p>	<p>MISSED APPROACH: Climb to 2000 direct OLUCE and hold.</p>
--	--

AWOS-3 119.375	NORFOLK APP CON 127.9 269.425	UNICOM 122.7 (CTAF) 0
--------------------------	---	---------------------------------



<p>2000 ↑</p>	<p>OLUCE ✧</p>				
<p>JOVAM 1.6 NM to RW22</p>		<p>WOLIB</p>			<p>ZAKEN</p>
<p>0.9 NM to RW22</p>		<p>3.50° TCH 45</p>			<p>2300</p>
<p>700</p>		<p>1800</p>			
<p>0.9</p>		<p>0.7 NM</p>	<p>2.9 NM</p>	<p>7.5 NM</p>	
CATEGORY	A	B	C	D	
LP MDA	440-1		371 (400-1)		
LNAV MDA	500-1	431 (500-1)	500-1¼		431 (500-1¼)
CIRCLING	500-1 430 (500-1)	560-1 490 (500-1)	680-1¾ 610 (700-1¾)	680-2 610 (700-2)	

