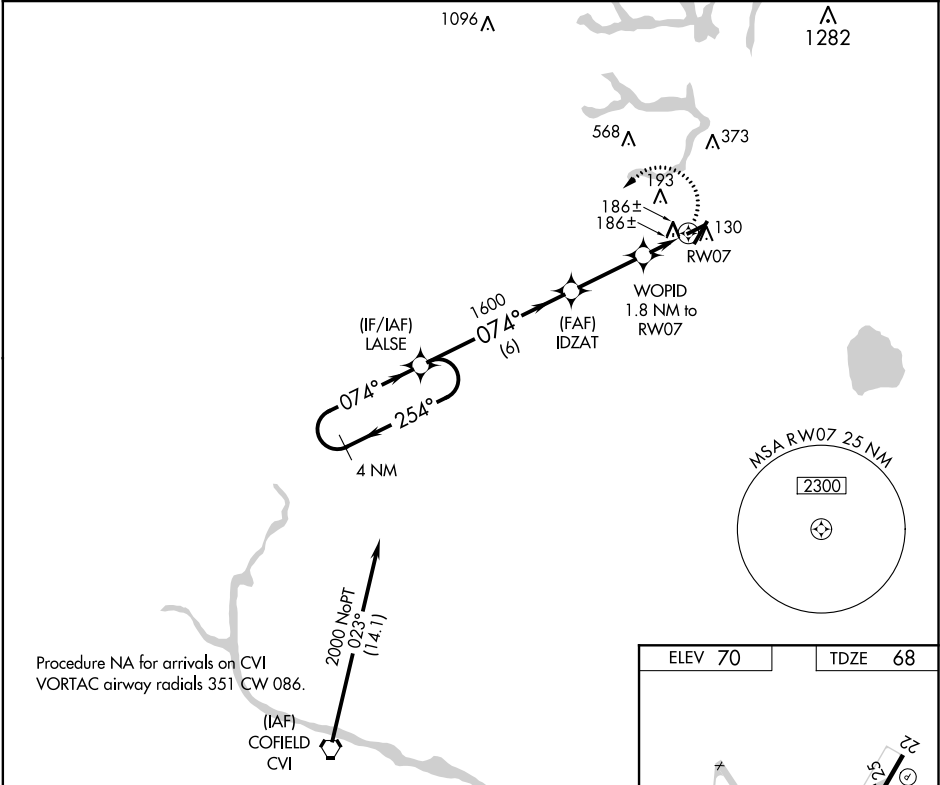


WAAS CH <b>78424</b> <b>W07A</b>	APP CRS <b>074°</b>	Rwy Idg <b>3750</b> TDZE <b>68</b> Apt Elev <b>70</b>
--	------------------------	---

**RNAV (GPS) RWY 7**  
SUFFOLK EXECUTIVE (SFQ)

 	DME/DME RNP-0.3 NA. Helicopter visibility reduction below 3/4 SM NA. When local altimeter setting not received, use Norfolk Intl altimeter setting and increase all MDA 60 feet.	MISSED APPROACH: Climbing left turn to 2000 direct LALSE and hold.
------	--	--

AWOS-3 <b>119.375</b>	NORFOLK APP CON <b>127.9 269.425</b>	UNICOM <b>122.7 (CTAF)</b>
--------------------------	---	-------------------------------



4 NM Holding Pattern		Visual Segment - Obstacles.		2000	LALSE
2000 ← 254° 074° →		LALSE	IDZAT	WOPID 1.8 NM to RW07	RW07
		1600	680		
		6 NM	2.9 NM	1.8 NM	
CATEGORY	A	B	C	D	
LP MDA	480-1	412 (500-1)		NA	
LNAY MDA	500-1	432 (500-1)		NA	
CIRCLING	500-1 430 (500-1)	560-1 490 (500-1)		NA	

