

APP CRS	Rwy Idg	2289
059°	TDZE	118
	Apt Elev	118

RNAV (GPS) RWY 6

POTOMAC AIRFIELD (VXK)

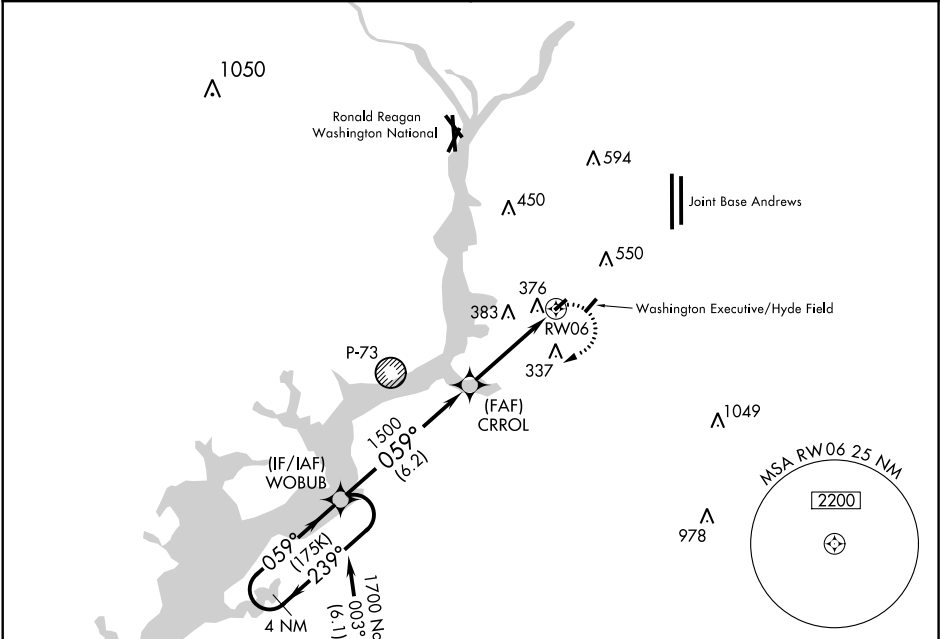
▼

NA

Circling NA SE of Rwy 6-24. DME/DME RNP-0.3 NA. If local altimeter setting not received, use Joint Base Andrews altimeter setting and increase all MDAs 40 feet. Rwy 6 helicopter visibility reduction below 1 SM NA.

MISSED APPROACH: Climbing right turn to 1700 direct WOBUB and hold.

POTOMAC APP CON	UNICOM
124.7 338.2	122.8 (CTAF) 0



ELEV 118	TDZE 118
----------	----------

4 NM Holding Pattern

Visual Segment - Obstacles.

1700

WOBUB

CRROL

RW06

1700

239°

059°

059°

1500

6.2 NM

4.2 NM

1700

WOBUB

0.3% UP

2665 X 40

059° to RW06

CATEGORY	A	B	C	D
LNAV MDA	680-1 562 (600-1)		NA	
CIRCLING	740-1 622 (700-1)		NA	

MIRL Rwy 6-24

NE-3, 03 DEC 2020 to 31 DEC 2020

NE-3, 03 DEC 2020 to 31 DEC 2020