

WAAS CH <b>53524</b> <b>W25A</b>	APP CRS <b>252°</b>	Rwy Idg <b>4299</b> TDZE <b>2653</b> Apt Elev <b>2653</b>
--	------------------------	---

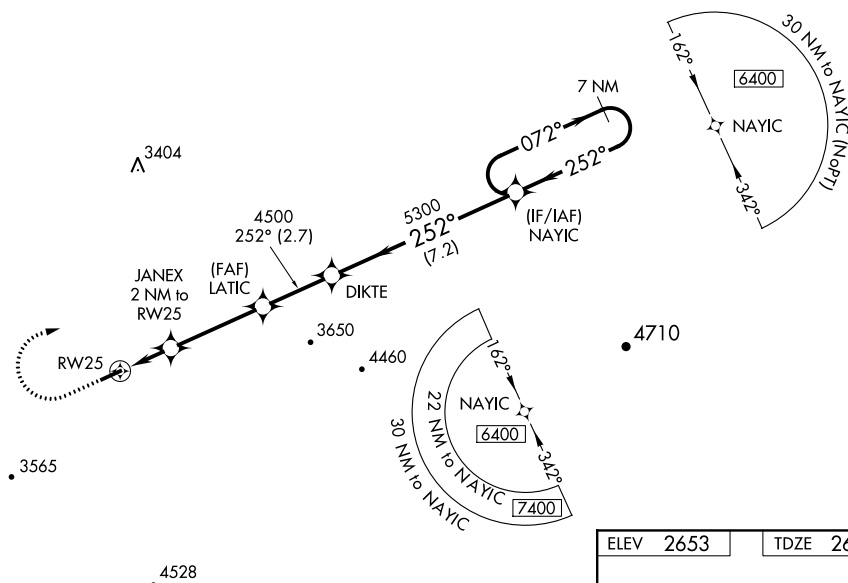
# RNAV (GPS) RWY 25

TAZEWELL COUNTY (JFZ)

Baro-VNAV NA when using Wise altimeter setting. For uncompensated Baro-VNAV systems, LNAV/VNAV NA below -20°C (-4°F) or above 54°C (130°F). DME/DME RNP-0.3 NA. Visibility reduction by helicopters NA. When local altimeter setting not received, use Wise altimeter setting and increase all DA 86 feet and all MDA 100 feet, increase LPV and LNAV/VNAV all Cats and Circling Cat C visibility ¾ mile, increase LNAV Cat C visibility ¼ mile. When VGSI inop, Straight-in/Circling Rwy 25 procedure NA at night. When VGSI inop, Circling Rwy 7 NA at night. Circling NA for Cat C south of Rwy 7-25.

**MISSED APPROACH:**  
Climb to 3800 then  
climbing right turn to  
6400 direct NAYIC  
and hold, continue  
climb-in-hold to 6400.

AWOS-3 <b>118.075</b>	ATLANTA CENTER <b>127.85 269.3</b>	GCO <b>135.075</b>	UNICOM <b>123.05 (CTAF) 0</b>
--------------------------	---------------------------------------	-----------------------	----------------------------------



3800 6400 NAYIC

VGS1 and RNAV glidepath not coincident  
(VGS1 Angle 4.00/TCH 54)

7 NM Holding Pattern

\* LNAV only.

DIKTE

JANEX  
2 NM to RW25

LATIC  
4500

252°

5300


072°

6400

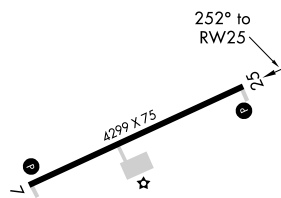
GP 3.00°  
TCH 54

3340\*

2 NM 3.6 NM 2.7 NM 2.2 NM

CATEGORY	A	B	C	D
LPV DA	3201-1 $\frac{7}{8}$	548 (600-1 $\frac{7}{8}$ )		NA
RNAV/ VNAV DA	3210-1 $\frac{7}{8}$	557 (600-1 $\frac{7}{8}$ )		NA
RNAV MDA	3200-1	547 (600-1)	3200-1 $\frac{5}{8}$ 547 (600-1 $\frac{5}{8}$ )	NA
 CIRCLING	3240-1	587 (600-1)	3240-1 $\frac{5}{8}$ 587 (600-1 $\frac{5}{8}$ )	NA

ELEV	2653		TDZE	2653
------	------	--	------	------



MIRL Rwy 7-25 **L**  
REIL Rwy 7 and 25 **L**

## RNAV (GPS) RWY 25