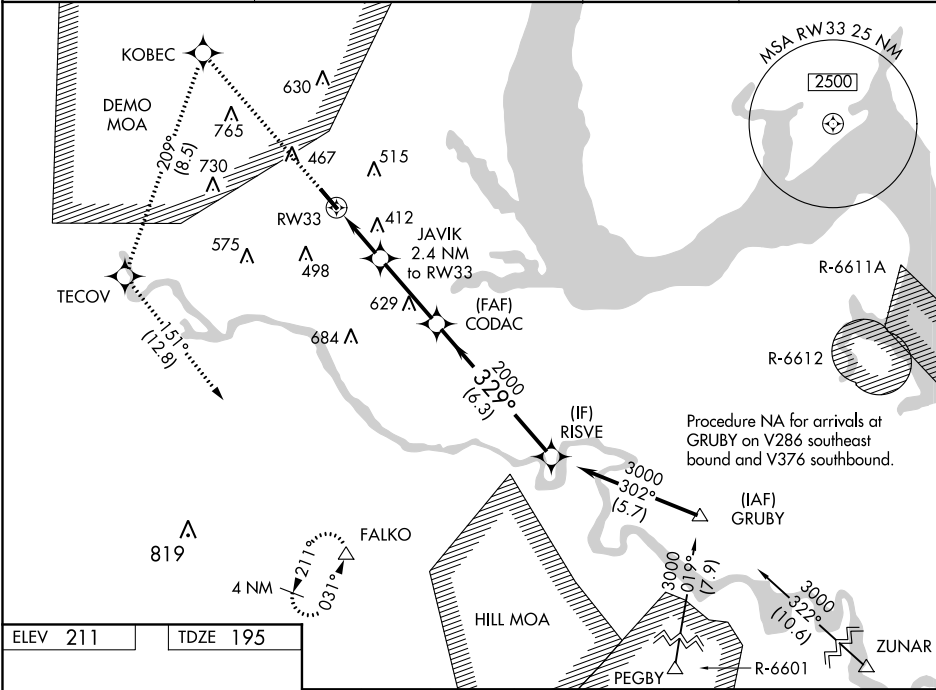


WAAS CH 81805 W33A	APP CRS 329°	Rwy Idg TDZE Apt Elev	5000 195 211
--	------------------------	-----------------------------	---

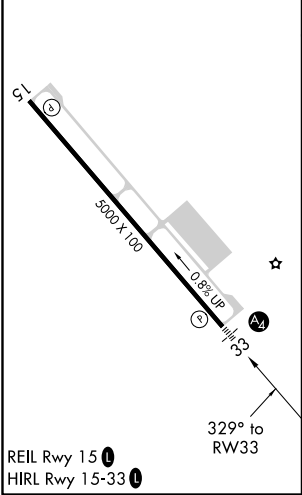
RNAV (GPS) RWY 33
STAFFORD RGNL (RMN)

RNP APCH. Inop table does not apply to LPV all Cats. For uncompensated Baro-VNAV systems, LNAV/VNAV NA below -15°C or above 54°C. For inop ALS, increase LNAV Cat C/D visibility to 1½ SM.	MALS 	MISSED APPROACH: Climb to 4000 direct KOBEC and left turn on track 209° to TECOV and left turn on track 151° to FALKO and hold.
---	----------	---

AWOS-3 126.325	POTOMAC APP CON ★ 127.05 290.375	GCO 135.075	UNICOM 122.725 (CTAF)
--------------------------	--	-----------------------	---------------------------------



ELEV 211	TDZE 195
----------	----------



4000

↑

KOBEC

✧

TECOV

✧

FALKO

✧

RISVE

* LNAV only

tr 209°

tr 151°

JAVIK

2.4 NM to RW33

CODAC

2000

3000

1.5 NM to RW33

1.5 NM

0.9 NM

3.1 NM

6.3 NM

329°

2000

GP 3.05°

TCH 46

* 980

CATEGORY	A	B	C	D
LPV DA	450-¾	255 (300-¾)		450-1 255 (300-1)
LNAV/ VNAV DA	546-¾	351 (400-¾)		546-1 351 (400-1)
LNAV MDA	700-¾	505 (500-¾)	700-1½	505 (500-1½)
CIRCLING	720-1 509 (600-1)	740-1 529 (600-1)	840-1¾ 629 (700-1¾)	880-2 669 (700-2)

NE-3, 03 DEC 2020 to 31 DEC 2020

NE-3, 03 DEC 2020 to 31 DEC 2020