

VORTAC BRV	APP CRS	Rwy Idg	5000
114.5	314°	TDZE	196
Chan 92		Apt Elev	212

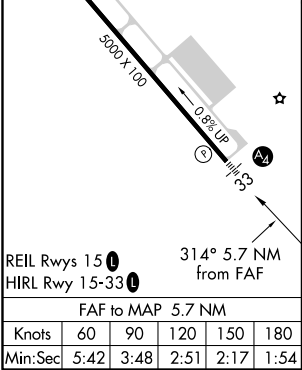
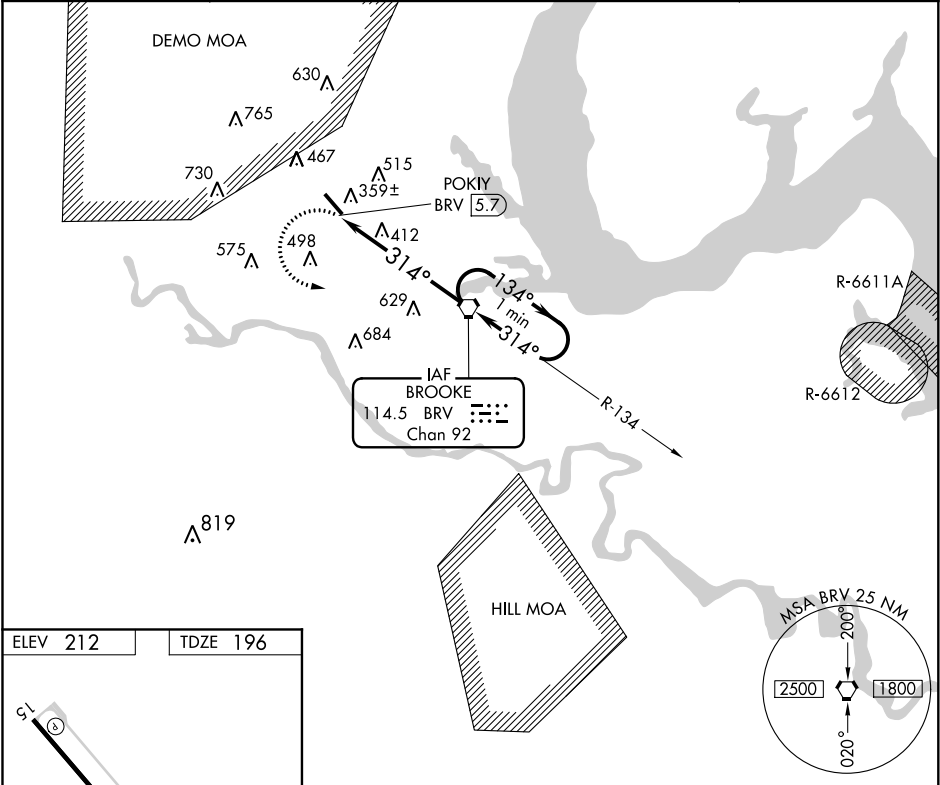
VOR RWY 33
STAFFORD RGNL (RMN)

▽ If local altimeter setting not received, use Shannon, Fredericksburg, VA altimeter setting and increase all MDAs 40 feet. VDP NA with Shannon, Fredericksburg, VA altimeter setting. Inoperative table does not apply to Cat C.

MALS

MISSED APPROACH: Climbing left turn to 2000 direct BRV VORTAC and hold.

AWOS-3 126.325	POTOMAC APP CON★ 127.05 290.375	GCO 135.075	UNICOM 122.725 (CTAF) 0
-------------------	------------------------------------	----------------	-----------------------------------



2000		BRV	BRV VORTAC		One Minute Holding Pattern	
		POKIY BRV 5.7	BRV 4.1	134° → 2000		← 314°
314°		≤ 2.95° TCH 45				
1.6		4.1 NM				
CATEGORY	A	B	C	D		
S-33	740-¾	544 (600-¾)	740-1½ 544 (600-1½)	740-1¾ 544 (600-1¾)		
CIRCLING	740-1	528 (600-1)	840-1¾ 628 (700-1¾)	860-2 648 (700-2)		

NE-3, 03 DEC 2020 to 31 DEC 2020

NE-3, 03 DEC 2020 to 31 DEC 2020