

VORTAC LDN
114.3
Chan **90**

APP CRS
335°

Rwy Idg
TDZE
Apt Elev
N/A
N/A
704

VOR-B

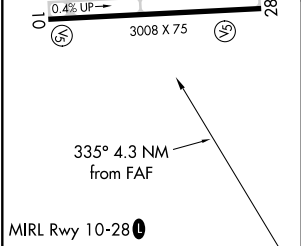
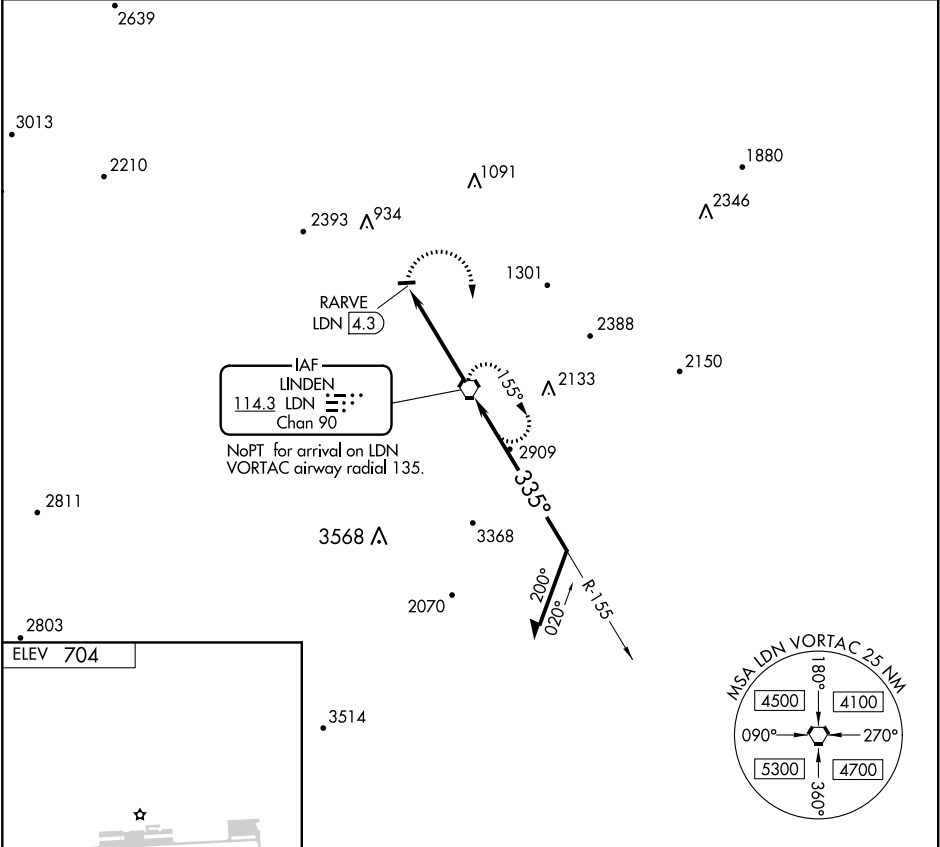
FRONT ROYAL-WARREN COUNTY (FRR)

NA

Procedure NA at night. Helicopter visibility reduction below 1 SM NA. When local altimeter setting not received, use Winchester altimeter setting and increase all MDA 40 feet.

MISSED APPROACH: Climbing right turn to 5000 direct LDN VORTAC and hold, continue climb-in-hold to 5000.

AWOS-3 121.85	OKV AWOS-3 124.85	POTOMAC APP CON 120.45	UNICOM 123.0 (CTAF) 0
-------------------------	-----------------------------	----------------------------------	--



FAF to MAP 4.3 NM						CATEGORY	A	B	C	D
Knots	60	90	120	150	180	CIRCLING	3300-1¼	3300-1½	NA	
Min:Sec	4:18	2:52	2:09	1:43	1:26		2596 (2600-1¼)	2596 (2600-1½)		

NE-3, 03 DEC 2020 to 31 DEC 2020

NE-3, 03 DEC 2020 to 31 DEC 2020